

NOTES:

1. SUBSTRATE MATERIAL:
ALUMINUM

2. FINISH (EXCEPT SURFACE S1):
BLACK ANODIZED

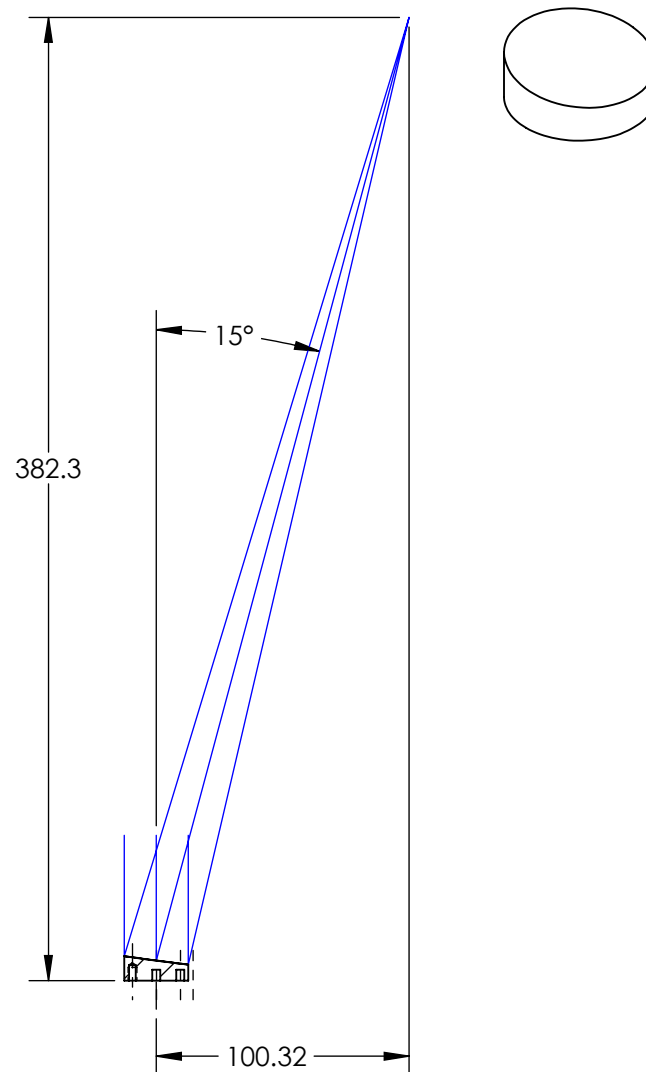
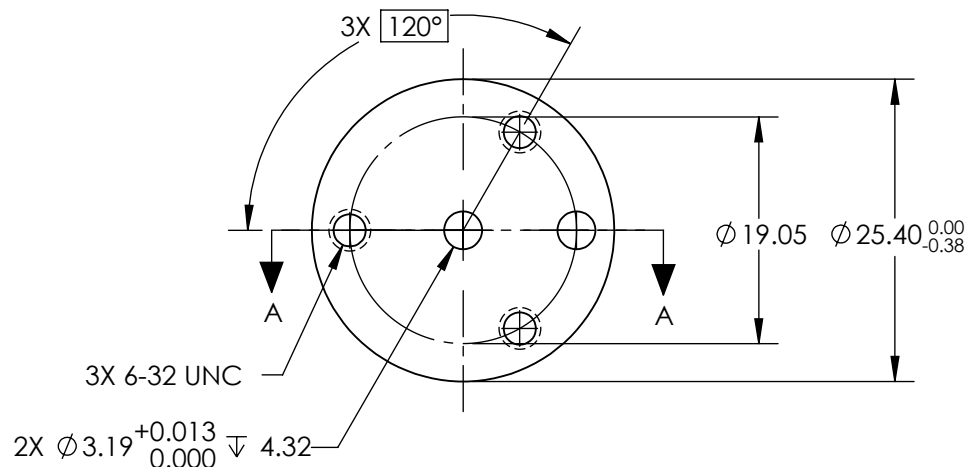
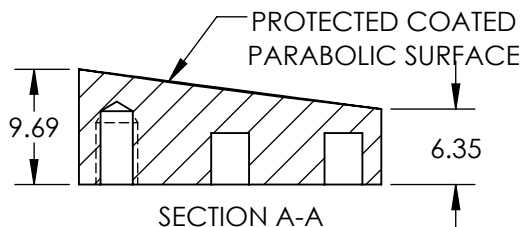
3. COATING (APPLY ACROSS CLEAR APERTURE)
S1: PROTECTED GOLD
R(AVG) >96% @ 700 - 2000nm
R(AVG) >96% @ 2000 - 10000nm

SURFACE ROUGHNESS : <175 Å RMS

4. EFL TOLERANCE: ±1%

5. ROHS COMPLIANT

**FOR INFORMATION ONLY:
DO NOT MANUFACTURE
PARTS TO THIS DRAWING**



SPECIFICATIONS SUBJECT TO CHANGE WITHOUT NOTICE
DIMENSIONS ARE FOR REFERENCE ONLY

REV. A	S1
SHAPE	PARABOLIC
REFLECTIVE WAVEFRONT DISTORTION AT 632.8nm (RMS)	$\lambda/4$
SURFACE FIGURE AT 632.8nm (RMS)	$\lambda/8$
CLEAR APERTURE	90%
BEVEL	PROTECTIVE AS NEEDED



ALL DIMS IN mm

Edmund Optics®

TITLE

Ø25.4 X 387.6mm EFL 15° OAP PROTECTED
GOLD MIRROR 175Å

DWG NO

69154

SHEET
1 OF 1