

NOTES:

1. SUBSTRATE MATERIAL:
FUSED SILICA

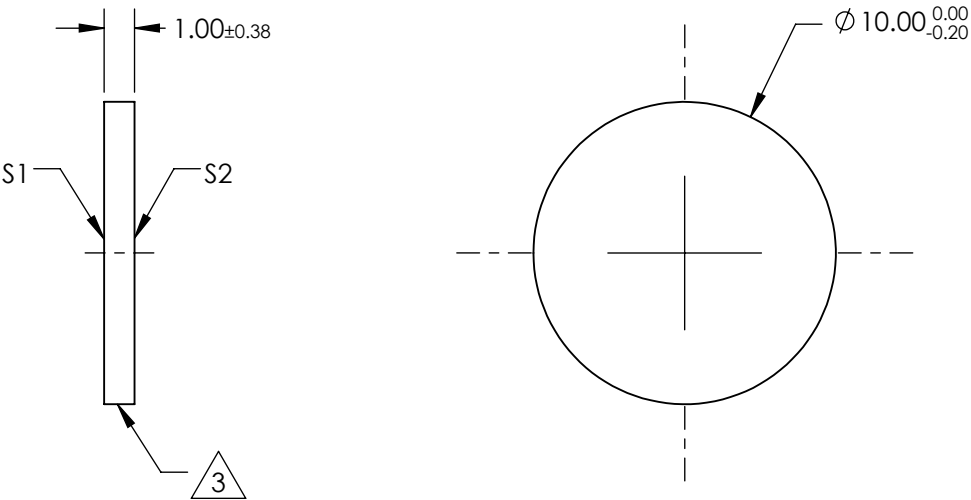
2. COATING (APPLY ACROSS CLEAR APERTURE)

S1: R(abs)= 50% ±5% @ 350nm, 45° AOI
R(avg)= 50% ±10% OVER 250 - 450nm, 45° AOI
T(abs)= 50% ±5% @ 350nm, 45° AOI
T(avg)= 50% ±10% OVER 250 - 450nm, 45° AOI

S2: BBAR (R(avg) <1%, R(abs) <2% OVER 250 - 450nm), 45° AOI


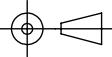
3. EDGES FINE GROUND

4. ROHS COMPLIANT



**FOR INFORMATION ONLY:
DO NOT MANUFACTURE
PARTS TO THIS DRAWING**

SPECIFICATIONS SUBJECT TO CHANGE WITHOUT NOTICE
DIMENSIONS ARE FOR REFERENCE ONLY

REV. A	S1	S2	 Edmund Optics®			
SHAPE	PLANO	PLANO				
CLEAR APERTURE	Ø8.50	Ø8.50				
SURFACE QUALITY	60-40	60-40	TITLE			
SURFACE FLATNESS	1λ	1λ				
BEVEL	PROTECTED AS NEEDED	PROTECTED AS NEEDED	ALL DIMS IN	mm	DWG NO	SHEET
					65921	1 OF 1