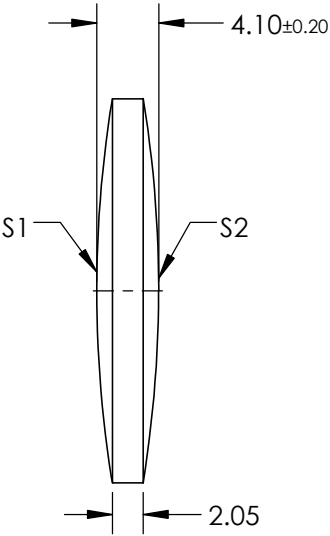
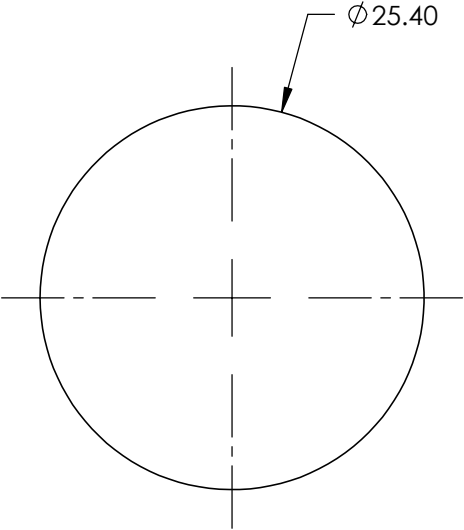



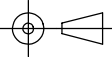
- NOTES:
- 1. SUBSTRATE: CALCIUM FLUORIDE (CaF2)
 - 2. COATING (APPLY ACROSS CLEAR APERTURE)
S1: NONE
S2: NONE
 - 3. DESIGN WAVELENGTH: 5 μ m
 - 4. FOCAL LENGTH TOLERANCE: ± 2 @ DWL
 - 5. RoHS: COMPLIANT



**FOR INFORMATION ONLY:
DO NOT MANUFACTURE
PARTS TO THIS DRAWING**

REV. A	S1 & S2
SHAPE	CONVEX
RADIUS	79.07
SURFACE QUALITY	60-40
CLEAR APERTURE	90%
BEVEL MAX	PROTECTIVE AS NEEDED

SPECIFICATIONS SUBJECT TO CHANGE WITHOUT NOTICE DIMENSIONS ARE FOR REFERENCE ONLY

EFL @ 5 μ m	100	 Edmund Optics[®]		
BFL @ 5 μ m	98.36			
THIRD ANGLE PROJECTION 	TITLE	25.4mm DIAMETER X 100mm FL, CaF2 DOUBLE-CONVEX LENS		
ALL DIMS IN	mm	DWG NO	47059	SHEET 1 OF 1