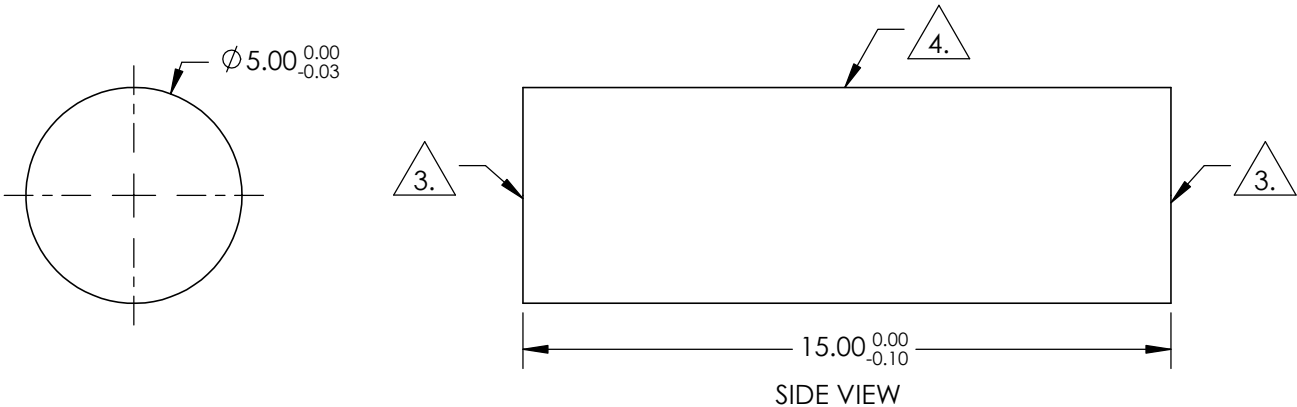



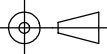
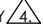
NOTES:

- 1. SUBSTRATE: FUSED SILICA
- 2. COEFFICIENT OF THERMAL EXPANSION:  
CTE = 0.55 [10<sup>-7</sup>/°C]
- 3. FINE GRIND SURFACE
- 4. POLISHED SURFACE
- 4. RoHS COMPLIANT



**FOR INFORMATION ONLY:  
DO NOT MANUFACTURE  
PARTS TO THIS DRAWING**

SPECIFICATIONS SUBJECT TO CHANGE WITHOUT NOTICE  
DIMENSIONS ARE FOR REFERENCE ONLY

REV. A					
WAVELENGTH RANGE (nm)	200 - 2200		TITLE	Ø5mm x 15mm, UV FUSED SILICA ROD LENS	
SURFACE QUALITY 	40-20				
TYPE	ROD LENS				
BEVEL	PROTECTIVE AS NEEDED				
		ALL DIMS IN	mm	DWG NO	49836
				SHEET 1 OF 1	