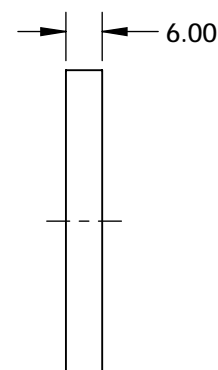
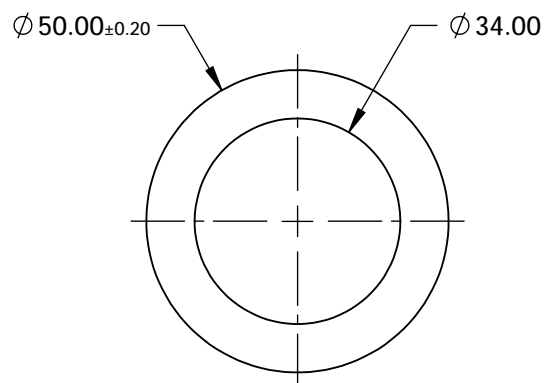
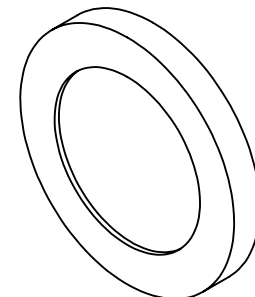


NOTES:

- SUBSTRATE:  
THALLIUM BROMOIODIDE



**FOR INFORMATION ONLY:  
DO NOT MANUFACTURE  
PARTS TO THIS DRAWING**

SPECIFICATIONS SUBJECT TO CHANGE WITHOUT NOTICE  
DIMENSIONS ARE FOR REFERENCE ONLY

DAMAGE THRESHOLD	50W/cm <sup>2</sup>
EXTINCTION RATIO	150:1 @ 3μm; 300:1 @ 15μm
PARALLELISM	≤3 ARCMIN
SURFACE FLATNESS	N/A
SURFACE QUALITY	60-40
TRANSMISSION	>60% @ 2.5 - 30μm



ALL DIMS IN mm

**EO<sup>®</sup> Edmund Optics<sup>®</sup>**

TITLE

Ø50mm, KRS-5, IR HOLOGRAPHIC WIRE GRID  
POLARIZER

DWG NO

62775

SHEET  
1 OF 1