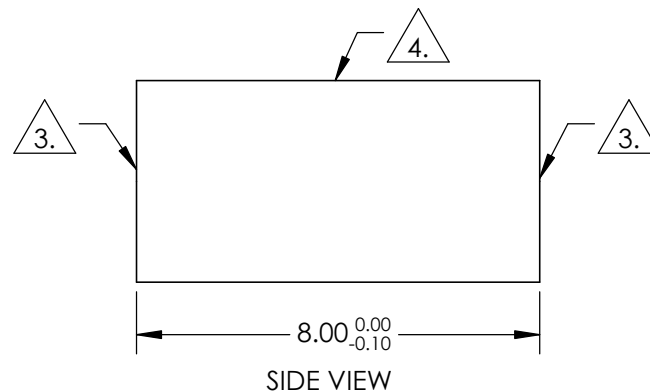
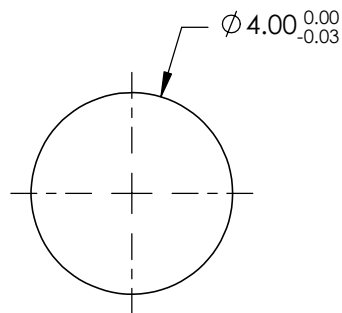


NOTES:

- 1. SUBSTRATE: FUSED SILICA
- 2. COEFFICIENT OF THERMAL EXPANSION:  
CTE = 0.55 [10<sup>-7</sup>/°C]
- 3. FINE GRIND SURFACE
- 4. POLISHED SURFACE
- 4. RoHS COMPLIANT



**FOR INFORMATION ONLY:  
DO NOT MANUFACTURE  
PARTS TO THIS DRAWING**

SPECIFICATIONS SUBJECT TO CHANGE WITHOUT NOTICE  
DIMENSIONS ARE FOR REFERENCE ONLY

REV. A	
WAVELENGTH RANGE (nm)	200 - 2200
SURFACE QUALITY	40-20
TYPE	ROD LENS
BEVEL	PROTECTIVE AS NEEDED

THIRD ANGLE PROJECTION

ALL DIMS INmm

Edmund Optics®

TITLE

Ø4mm x 8mm, UV FUSED SILICA ROD LENS

DWG NO

49834

SHEET

1 OF 1