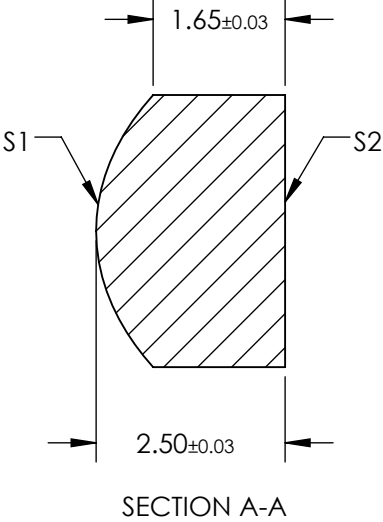
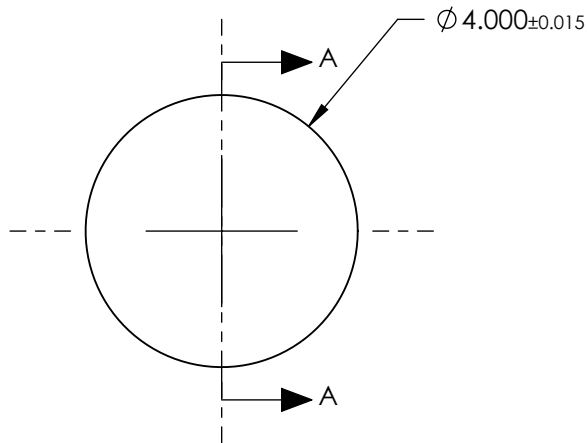


NOTES:


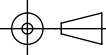
1. SUBSTRATE:
D-ZLAF52LA
2. NUMERICAL APERTURE: 0.6
3. COATING
S1: R(abs) <1.0% @ 1050 - 1600nm
S2: R(abs) <1.0% @ 1050 - 1600nm
4. FOCAL LENGTH TOLERANCE: $\pm 1\%$
5. TRANSMITTED WAVEFRONT:
DIFFRACTION LIMITED



**FOR INFORMATION ONLY:
DO NOT MANUFACTURE
PARTS TO THIS DRAWING**

SPECIFICATIONS SUBJECT TO CHANGE WITHOUT NOTICE DIMENSIONS ARE FOR REFERENCE ONLY

REV. A	S1	S2
SHAPE	CONVEX	PLANO
SURFACE QUALITY	40-20	40-20
BEVEL MAX	PROTECTIVE AS NEEDED	PROTECTIVE AS NEEDED

EFL	2.97	 Edmund Optics®		
BFL	1.56			
THIRD ANGLE PROJECTION 	TITLE	0.60 NA 2.97mm FL 1050-1600nm AR COATED, MOLDED ASPHERIC LENS		
ALL DIMS IN mm	DWG NO	83632	SHEET 1 OF 1	