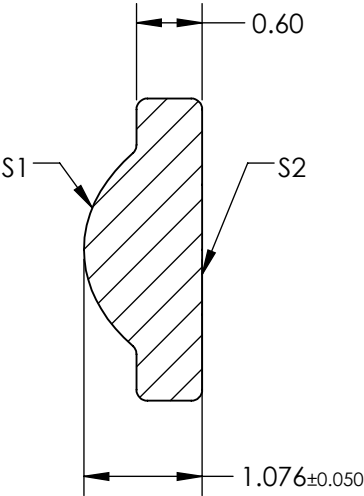
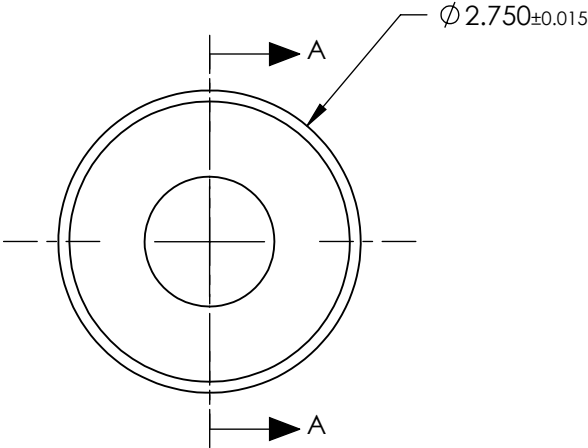


NOTES:

- 1. SUBSTRATE:
L-LAL12
- 2. NUMERICAL APERTURE: 0.62
- 3. COATING
S1 & S2: R(ABS) < 1.0% @ 350 - 500nm
- 4. FOCAL LENGTH TOLERANCE: ±1%
- 5. TRANSMITTED WAVEFRONT ERROR (λ, RMS): < 0.070


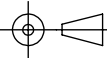


SECTION A-A

**FOR INFORMATION ONLY:
DO NOT MANUFACTURE
PARTS TO THIS DRAWING**

SPECIFICATIONS SUBJECT TO CHANGE WITHOUT NOTICE DIMENSIONS ARE FOR REFERENCE ONLY

	S1	S2
SHAPE	CONVEX	PLANO
SURFACE QUALITY	20 - 10	20 - 10
CLEAR APERTURE	Ø1.70	Ø1.70
BEVEL MAX	PROTECTIVE AS NEEDED	PROTECTIVE AS NEEDED

EFL	1.42	 Edmund Optics®		
BFL	0.86			
THIRD ANGLE PROJECTION 	TITLE	488, 0.62 NA, BBAR COATED, ASPHERIC LENS		
ALL DIMS IN	mm	DWG NO	83679	SHEET 1 OF 1