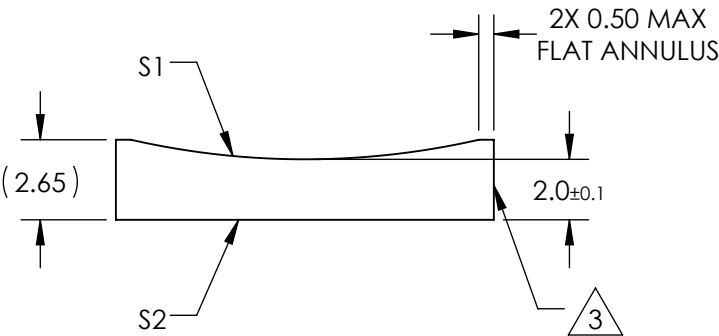
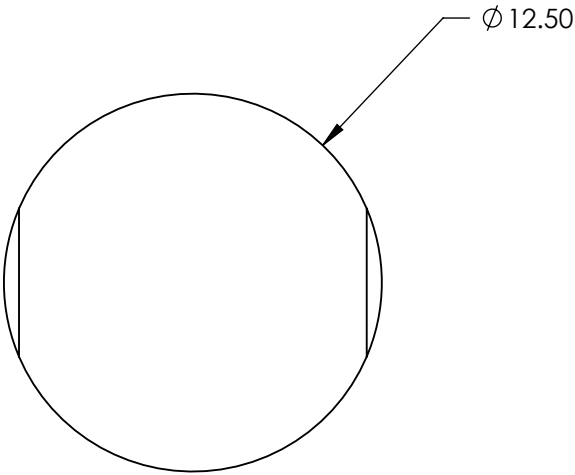


NOTES:

1. SUBSTRATE MATERIAL:
N-BK7
2. COATING (APPLY ACROSS CLEAR APERTURE)
- S1 & S2: MgF2
- R(avg) $\leq 1.75\%$ @ 400 - 700nm


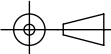
3. FINE GROUND SURFACE

4. POWER, IRREGULARITY, AND SURFACE QUALITY
SPECIFICAIONS APPLY ACROSS CLEAR APERTURE
5. RoHS COMPLIANT



**FOR INFORMATION ONLY:
DO NOT MANUFACTURE
PARTS TO THIS DRAWING**

SPECIFICATIONS SUBJECT TO CHANGE WITHOUT NOTICE
DIMENSIONS ARE FOR REFERENCE ONLY

REV. A	S1	S2	 Edmund Optics®				
SHAPE	CONVEX	PLANO					
RADIUS	-25.84	∞	EFL	-50	BFL	-51.32	
SURFACE QUALITY	60-40	60-40			TITLE	12.5mm DIA X -50mm FL MgF2 COATED, CYLINDER LENS	
CLEAR APERTURE	Ø11.50	Ø11.50			THIRD ANGLE PROJECTION		
COATING APERTURE	Ø11.50	Ø11.50					
BEVEL	PROTECTED AS NEEDED	PROTECTED AS NEEDED	ALL DIMS IN	mm	DWG NO	48377	SHEET 1 OF 1