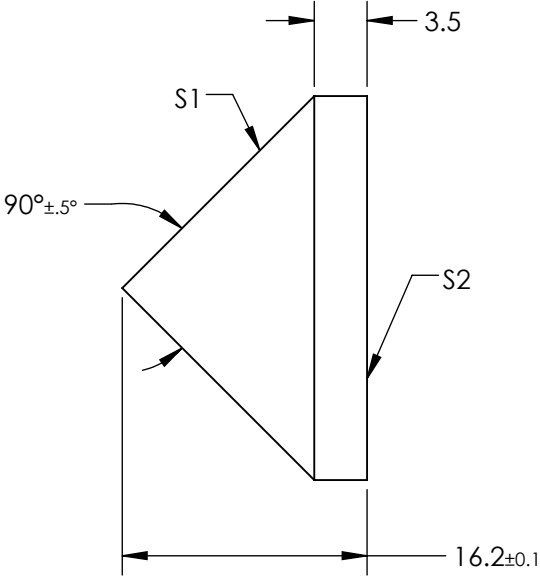
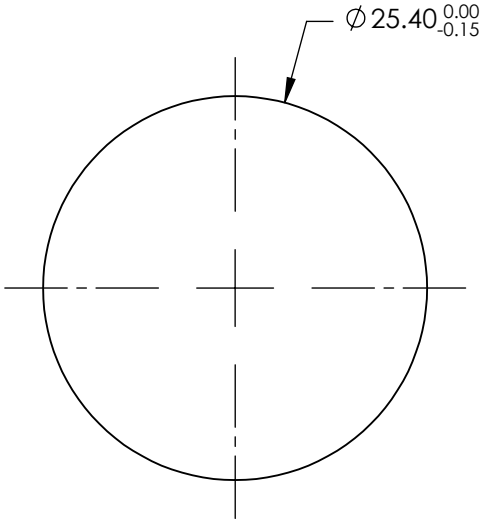


NOTES:

1. SUBSTRATE MATERIAL:  
FUSED SILICA
2. COATING (APPLY ACROSS CLEAR APERTURE)  
  
S1& S2: R(ABS) ≤1.0% @ 250 - 425nm  
R(AVG) ≤0.75% @ 250 - 425nm  
R(AVG) ≤0.5% @ 370 - 420nm
3. RoHS COMPLIANT




**FOR INFORMATION ONLY:**  
**DO NOT MANUFACTURE**  
**PARTS TO THIS DRAWING**

SPECIFICATIONS SUBJECT TO CHANGE WITHOUT NOTICE  
DIMENSIONS ARE FOR REFERENCE ONLY

	S1	S2
SHAPE	CONICAL	PLANO
SURFACE ACCURACY	λ/4	λ/4
SURFACE QUALITY	40-20	40-20
CLEAR APERTURE	>90%	>90%
BEVEL	PROTECTIVE AS NEEDED	PROTECTIVE AS NEEDED

THIRD ANGLE  
PROJECTION

ALL DIMS INmm

 **Edmund Optics®**

TITLE

90° APEX ANGLE, 25.4MM DIA, UV-AR  
COATED AXICON

DWG NO

83797

SHEET  
1 OF 1