

NOTES:

1. SUBSTRATE MATERIAL:
FUSED SILICA
2. COATING (APPLY ACROSS CLEAR APERTURE)

S1: Ultrafast Laser
R(AVG) >99% @ 960 - 1100nm

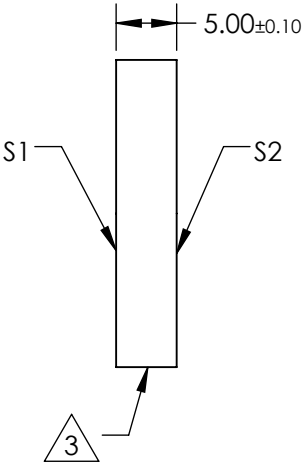
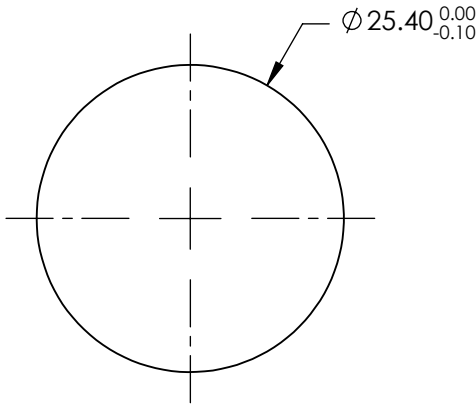
S2: NONE

GDD SPECIFICATION: 0 ±30fs² @ 950-1110nm

3. FINE GROUND SURFACE

4. RoHS COMPLIANT

FOR INFORMATION ONLY:
DO NOT MANUFACTURE
PARTS TO THIS DRAWING



SPECIFICATIONS SUBJECT TO CHANGE WITHOUT NOTICE
DIMENSIONS ARE FOR REFERENCE ONLY

REV. A	S1	S2
SHAPE	PLANO	PLANO
CLEAR APERTURE (%)	Ø22.86	N/A
SURFACE QUALITY	20-10	COMMERCIAL POLISH
SURFACE FLATNESS	λ/8	N/A
BEVEL	PROTECTIVE AS NEEDED	PROTECTIVE AS NEEDED

THIRD ANGLE
PROJECTION

Edmund Optics®

TITLE

960 - 1100nm, 25.4mm Dia. X 5.00mm Thickness, Ultrafast Broadband Laser Mirror

ALL DIMS IN

mm

DWG NO

84618

SHEET
1 OF 1