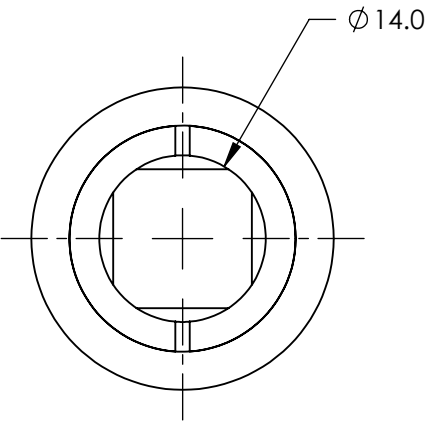
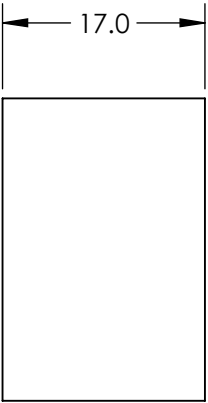
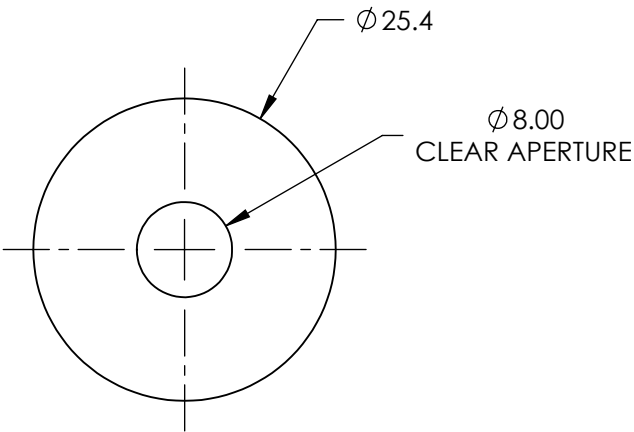
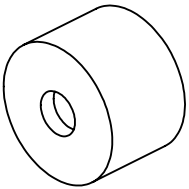


NOTES:

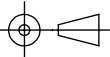
- 1. SUBSTRATE:  
CALCITE
- 2. BEAM DEVIATION: <3 arcmin
- 3. RoHS COMPLIANT



**FOR INFORMATION ONLY:  
DO NOT MANUFACTURE  
PARTS TO THIS DRAWING**

SPECIFICATIONS SUBJECT TO CHANGE WITHOUT NOTICE  
DIMENSIONS ARE FOR REFERENCE ONLY

|                          |   |
|--------------------------|---|
| WAVEFRONT DISTORTION     | $\lambda/2$ @ 632.8 nm                      |
| DAMAGE THRESHOLD, PULSED | 2 J/cm <sup>2</sup> , 10ns, 10 Hz @ 1064 nm |
| WAVELENGTH RANGE (nm)    | 350 - 2300                                  |
| SURFACE QUALITY          | 20-10                                       |
| EXTINCTION RATIO         | < 0.00005                                   |

|  |    |
|--|----|
| THIRD ANGLE PROJECTION  |    |
| ALL DIMS IN  | mm |



|        |  |                 |  |
|--------|--|-----------------|--|
| TITLE  | GLAN-TAYLOR POLARIZER 350 - 2300nm,<br>8mm |                 |  |
| DWG NO | 89547                                      | SHEET<br>1 OF 1 |  |