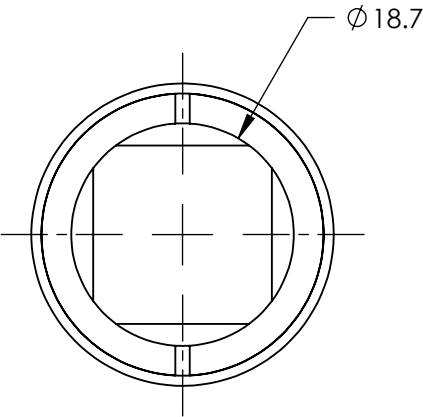
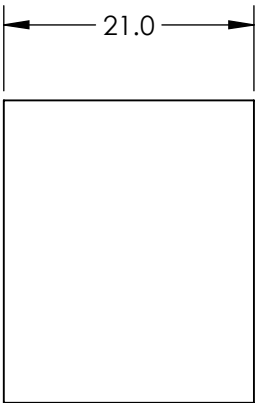
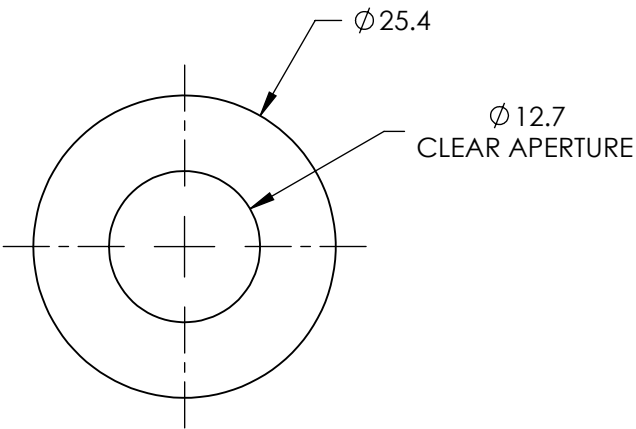
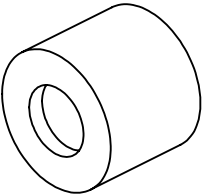


NOTES:

- 1. SUBSTRATE:
CALCITE
- 2. BEAM DEVIATION: <3 arcmin
- 3. RoHS COMPLIANT

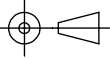


**FOR INFORMATION ONLY:
DO NOT MANUFACTURE
PARTS TO THIS DRAWING**


SPECIFICATIONS SUBJECT TO CHANGE WITHOUT NOTICE
DIMENSIONS ARE FOR REFERENCE ONLY

WAVEFRONT DISTORTION	$\lambda/2$ @ 632.8 nm
DAMAGE THRESHOLD, PULSED	2 J/cm ² , 10ns, 10 Hz @ 1064 nm
WAVELENGTH RANGE (nm)	350 - 2300
SURFACE QUALITY	20-10
EXTINCTION RATIO	< 0.00005

THIRD ANGLE
PROJECTION



ALL DIMS IN mm

 **Edmund Optics®**

TITLE	GLAN-TAYLOR POLARIZER 350 - 2300nm, 12.7mm		
DWG NO	89548	SHEET 1 OF 1	