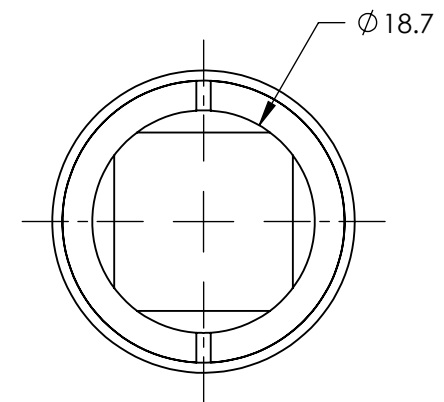
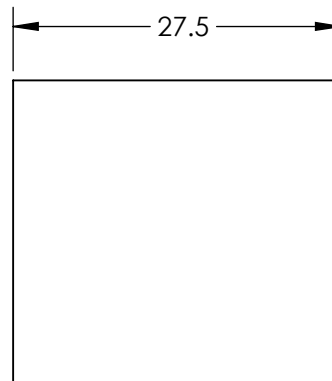
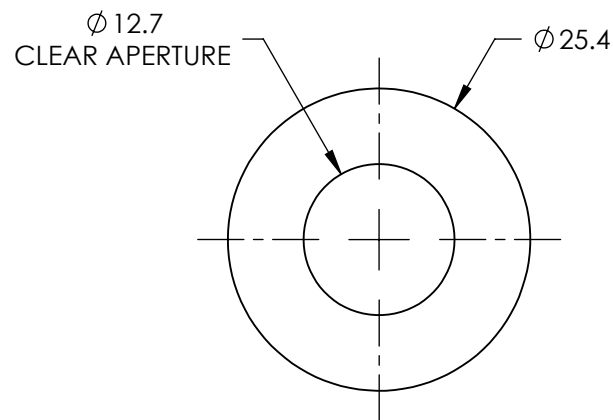
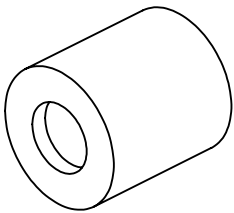


NOTES:

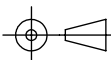
- 1. SUBSTRATE:
CALCITE
- 2. BEAM DEVIATION: <3 ARCMIN
- 3. RoHS COMPLIANT




**FOR INFORMATION ONLY:
DO NOT MANUFACTURE
PARTS TO THIS DRAWING**

SPECIFICATIONS SUBJECT TO CHANGE WITHOUT NOTICE
DIMENSIONS ARE FOR REFERENCE ONLY

| | |
|--------------------------|---|
| WAVEFRONT DISTORTION | $\lambda/2$ @ 632.8 nm |
| DAMAGE THRESHOLD, PULSED | 5 J/cm ² , 10ns, 10 Hz @ 1064 nm |
| WAVELENGTH RANGE (nm) | 350 - 2300 |
| SURFACE QUALITY | 20-10 |
| EXTINCTION RATIO | < 0.00005 |

| | |
|--|----|
| THIRD ANGLE PROJECTION  | |
| ALL DIMS IN | mm |

| | | | |
|---|--|-----------------|--|
|  | | | |
| TITLE | GLAN-LASER POLARIZER 350 - 2200nm, 12.7mm | | |
| DWG NO | 89552 | SHEET 1 OF 1 | |