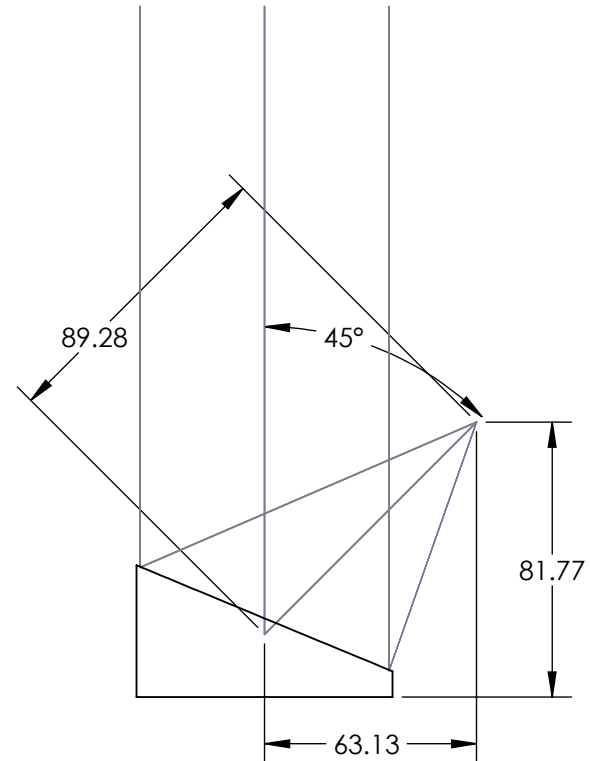
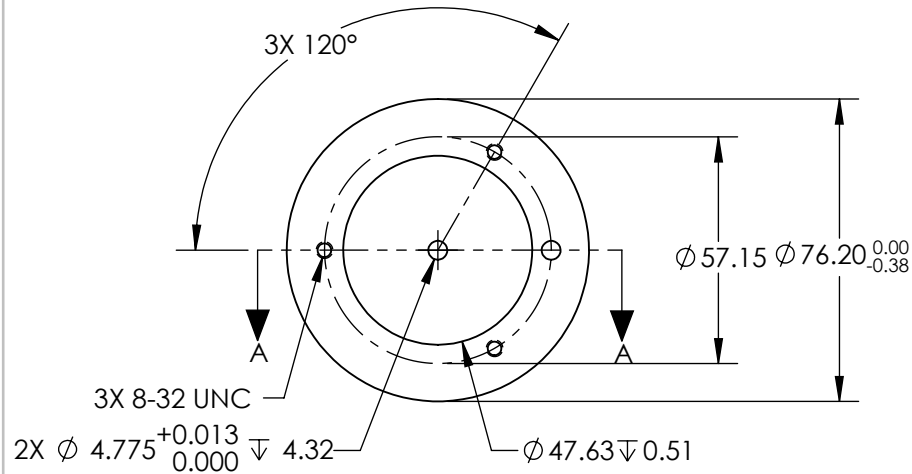
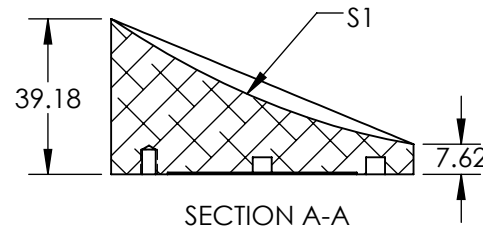


NOTES:


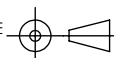
- SUBSTRATE MATERIAL:
ALUMINUM
- FINISH (EXCEPT SURFACE S1):
BLACK ANODIZED
- COATING (APPLY ACROSS CLEAR APERTURE)
S1: BARE GOLD
R(AVG) >94% @ 0.7-0.8 μ m
R(AVG) >97% @ 0.8-2.0 μ m
R(AVG) >98% @ 2-12 μ m

SURFACE ROUGHNESS: <100 Å RMS
- FOCAL LENGTH TOLERANCE: $\pm 1\%$
- ROHS COMPLIANT

**FOR INFORMATION ONLY:
DO NOT MANUFACTURE
PARTS TO THIS DRAWING**



SPECIFICATIONS SUBJECT TO CHANGE WITHOUT NOTICE
DIMENSIONS ARE FOR REFERENCE ONLY

REV. A	S1	EFL	89.28	 Edmund Optics®		
SHAPE	PARABOLIC	PFL	76.20			
REFLECTIVE WAVEFRONT DISTORTION AT 632.8nm (RMS)	3/2λ			TITLE	Ø76.2 X 89.28mm EFL 45° OAP BARE GOLD MIRROR 100Å	
SURFACE FIGURE AT 632.8nm (RMS)	3/4λ					
CLEAR APERTURE	90%					
BEVEL	PROTECTIVE AS NEEDED	ALL DIMS IN	mm	DWG NO	35680	SHEET 1 OF 1