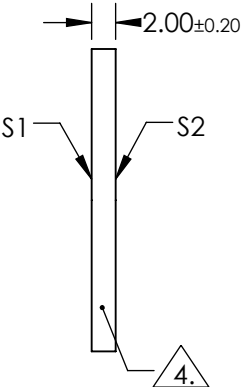
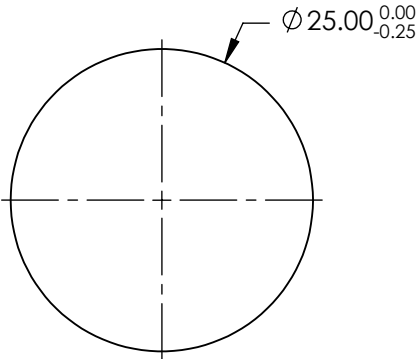
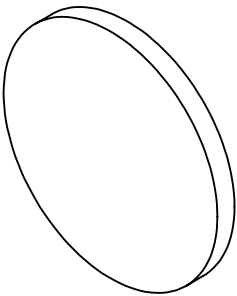


NOTES:

- 1. SUBSTRATE: N-BK7
- 2. S2 TO BE PARALLEL WITH S1 TO < 1ARCMIN
- 3. COATING (APPLY ACROSS CLEAR APERTURE)
S1 & S2: R(AVG) ≤0.5% @ 600 - 1050nm

4. FINE GRIND SURFACE


- 5. RoHS COMPLIANT
- 6. SURFACE FLATNESS (P-V):
λ/4 (per inch over clear aperture)



**FOR INFORMATION ONLY:
DO NOT MANUFACTURE
PARTS TO THIS DRAWING**

SPECIFICATIONS SUBJECT TO CHANGE WITHOUT NOTICE
DIMENSIONS ARE FOR REFERENCE ONLY

	S1	S2
SHAPE	PLANO	PLANO
SURFACE QUALITY	60-40	60-40
CLEAR APERTURE	Ø22.50	Ø22.50
BEVEL	PROTECTIVE AS NEEDED	PROTECTIVE AS NEEDED

 **Edmund Optics®**

THIRD ANGLE PROJECTION	TITLE	25mm DIA., 2mm THICK, NIR I COATED λ/4 N-BK7 WINDOW	
ALL DIMS IN	mm	DWG NO	36999
			SHEET 1 OF 1