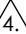
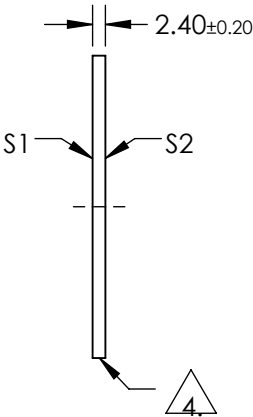
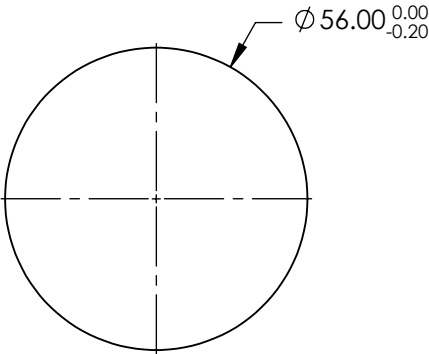
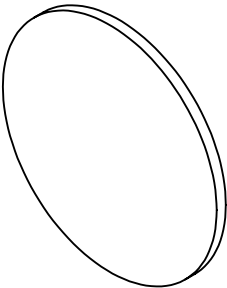


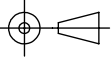
- NOTES:
- 1. SUBSTRATE: B270
  - 2. CONSTRUCTION: DICHROIC
  - 3. SURFACE S2 TO BE PARALLEL TO SURFACE S1 TO WITHIN <3 arcmin
  - 4.  EDGE CUT
  - 5. EXTINCTION RATIO: 100:1
  - 6. OPERATING TEMPERATURE (°C) : -15 to +70
  - 7. WAVELENGTH RANGE: 400 - 700nm
  - 8. RoHS: COMPLIANT



**FOR INFORMATION ONLY:  
DO NOT MANUFACTURE  
PARTS TO THIS DRAWING**

SPECIFICATIONS SUBJECT TO CHANGE WITHOUT NOTICE  
DIMENSIONS ARE FOR REFERENCE ONLY

	S1 & S2
SHAPE	PLANO
SURFACE FLATNESS	4 - 6λ
SURFACE QUALITY	80-50
BEVEL	PROTECTIVE AS NEEDED

THIRD ANGLE PROJECTION 

ALL DIMS IN	mm
-------------	----

 <b>Edmund Optics®</b>	
TITLE	56mm DIA. Unmounted Linear Glass Polarizing Filter
DWG NO	53351
SHEET 1 OF 1	