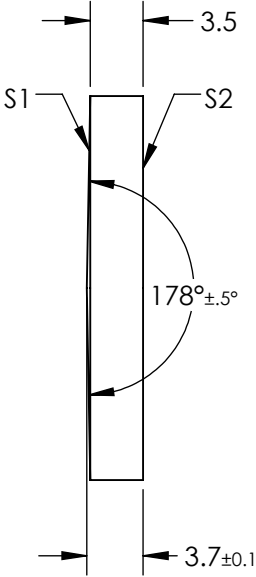
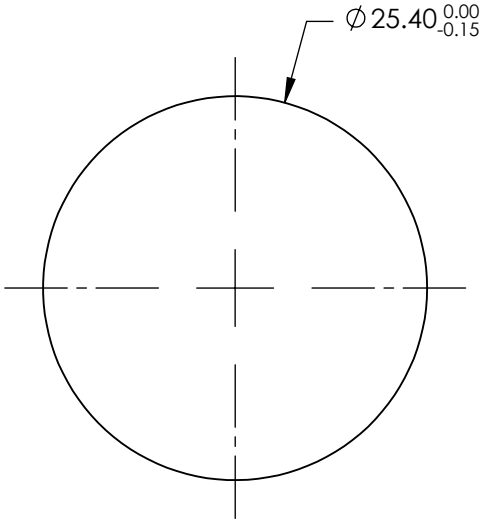


NOTES:

- 1. SUBSTRATE MATERIAL:
FUSED SILICA
- 2. COATING (APPLY ACROSS CLEAR APERTURE)

S1 & S2: NONE
- 3. RoHS COMPLIANT



**FOR INFORMATION ONLY:
DO NOT MANUFACTURE
PARTS TO THIS DRAWING**

SPECIFICATIONS SUBJECT TO CHANGE WITHOUT NOTICE
DIMENSIONS ARE FOR REFERENCE ONLY

REV. A	S1	S2
SHAPE	CONICAL	PLANO
SURFACE ACCURACY	$\lambda/4$	$\lambda/4$
SURFACE QUALITY	40-20	40-20
CLEAR APERTURE	>90	>90
BEVEL	PROTECTIVE AS NEEDED	PROTECTIVE AS NEEDED

THIRD ANGLE PROJECTION

ALL DIMS IN

mm

Edmund Optics®

TITLE

178° APEX ANGLE, Ø25.4mm, UNCOATED
AXICON

DWG NO

36664

SHEET
1 OF 1