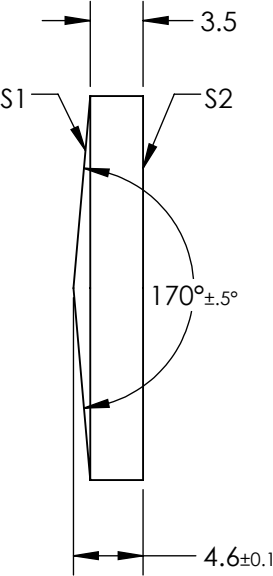
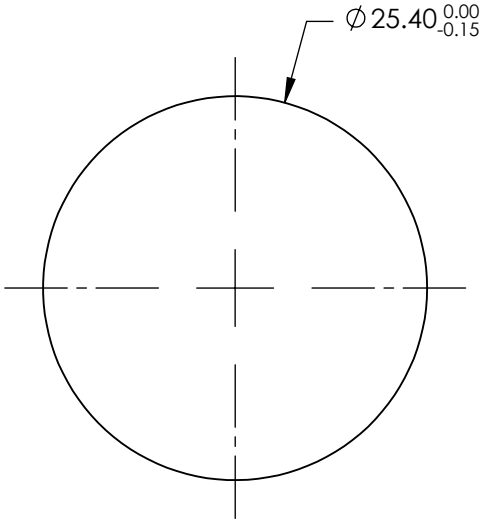


NOTES:

- 1. SUBSTRATE MATERIAL:
FUSED SILICA
- 2. COATING (APPLY ACROSS CLEAR APERTURE)

S1 & S2: VIS 0°
R(AVG) ≤ 0.4% FROM 425-675nm @ 0° AOI
- 3. RoHS COMPLIANT

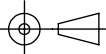



FOR INFORMATION ONLY:
DO NOT MANUFACTURE
PARTS TO THIS DRAWING

SPECIFICATIONS SUBJECT TO CHANGE WITHOUT NOTICE
DIMENSIONS ARE FOR REFERENCE ONLY

REV. A	S1	S2
SHAPE	CONICAL	PLANO
SURFACE ACCURACY	λ/4	λ/4
SURFACE QUALITY	40-20	40-20
CLEAR APERTURE	>90	>90
BEVEL	PROTECTIVE AS NEEDED	PROTECTIVE AS NEEDED

THIRD ANGLE PROJECTION



 Edmund Optics®

TITLE

170° APEX ANGLE, Ø25.4mm, VIS 0°
AXICON

DWG NO

36667

SHEET
1 OF 1