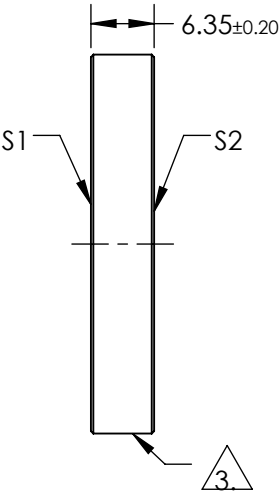
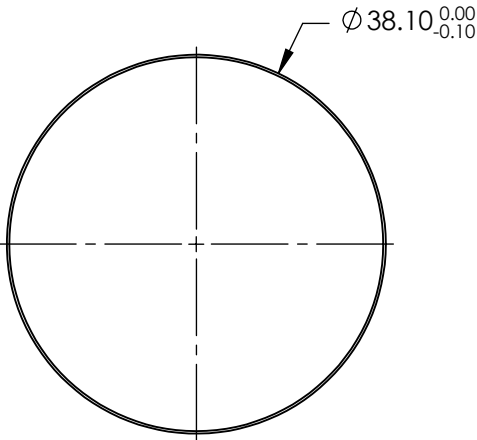
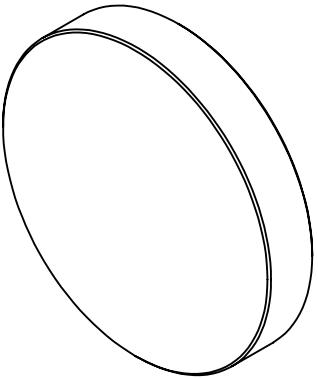



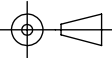
NOTES:

- 1. SUBSTRATE MATERIAL:  
FUSED SILICA
- 2. COATING (APPLY ACROSS COATING APERTURE):  
S1 & S2: NONE
- 3. FINE GRIND SURFACE
- 4. ROHS: COMPLIANT



**FOR INFORMATION ONLY:  
DO NOT MANUFACTURE  
PARTS TO THIS DRAWING**

SPECIFICATIONS SUBJECT TO CHANGE WITHOUT NOTICE  
DIMENSIONS ARE FOR REFERENCE ONLY

		S1	S2	 Edmund Optics®			
SHAPE		PLANO	PLANO		TITLE	Ø38.1mm x 6.35mm LASER MIRROR SUBSTRATE	
SURFACE QUALITY		10-5	COMMERCIAL POLISH				
CLEAR APERTURE		Ø34.29	N/A				
BEVEL		PROTECTIVE AS NEEDED	PROTECTIVE AS NEEDED		DWG NO	38002	SHEET 1 OF 1
				ALL DIMS IN	mm		