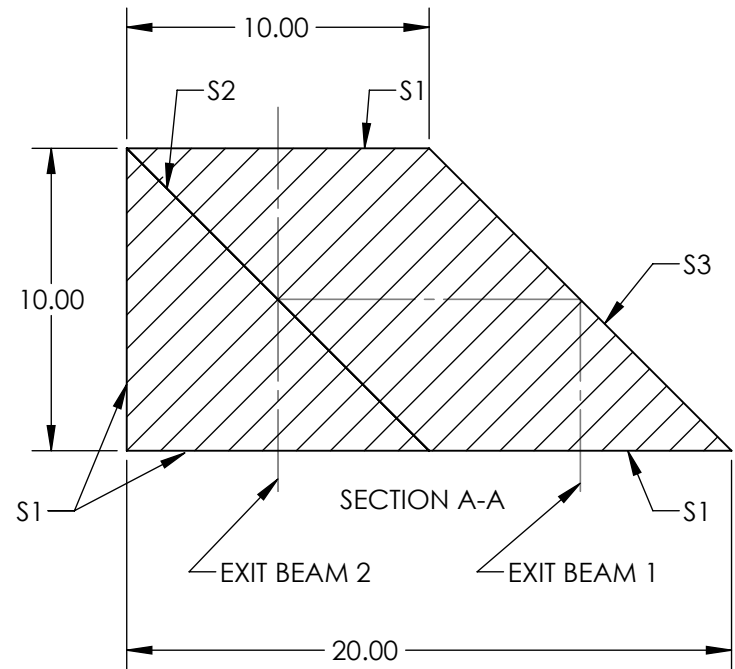
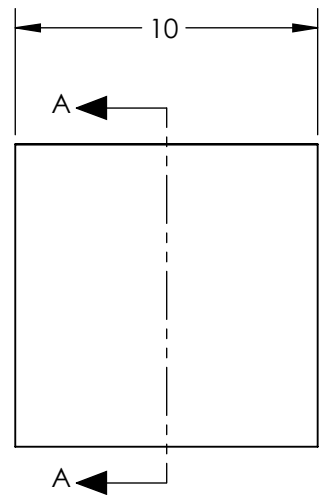
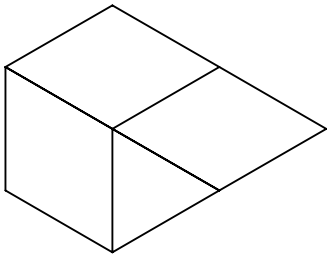


NOTES:

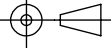
- 1. EXIT BEAMS 1 & 2 PARALLEL AFTER BONDING TO < 2 ARCMIN
- 3. COATING (APPLY ACROSS CLEAR APERTURE)
 - S1: R(avg) <0.5% @ 430 - 670nm
 - S2: AVERAGE TRANSMITTANCE 45% ±5% @ 430 - 670nm AT 45° AOI
 - ABSORPTION <10% @ 430 - 670nm @ 45° AOI
 - POLARIZATION DEVIATION <6% @ 430 - 670nm @ 45° AOI
 - S3: NONE
- 4. RoHS COMPLIANT



**FOR INFORMATION ONLY:
DO NOT MANUFACTURE
PARTS TO THIS DRAWING**

SPECIFICATIONS SUBJECT TO CHANGE WITHOUT NOTICE
DIMENSIONS ARE FOR REFERENCE ONLY



REV. A	S1	S2	THIRD ANGLE PROJECTION 		TITLE	10mm, VIS , LATERAL DISPLACEMENT NON-POLARIZED BEAMSPLITTER	
SURFACE QUALITY	40-20	40-20	ALL DIMS IN	mm	DWG NO	47188	SHEET 1 OF 1
SURFACE FLATNESS	λ/8	λ/8					