

NOTES:

1. SUBSTRATE
FUSED SILICA
2. ROHS COMPLIANT
3. CENTERING TOLERANCE (AT 587.6nm):
BEAM DEVIATION (HALF ANGLE): <1 ARCMIN
4. COATING (APPLY ACROSS COATING APERTURE):

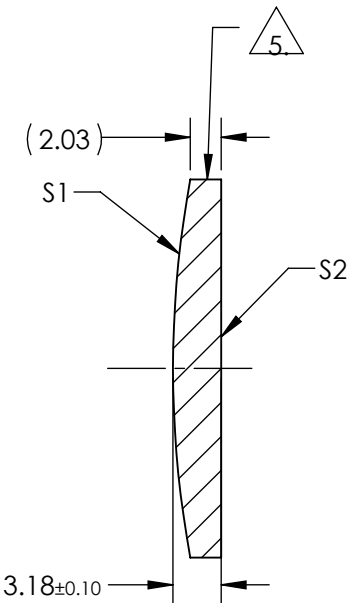
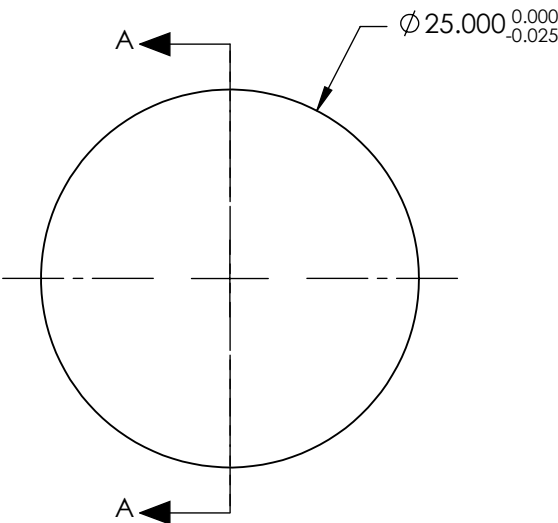
S1 & S2: NONE
R(ABS) <0.25% @ 1064nm @ 0° AOI

DAMAGE THRESHOLD,
PULSED: 15 J/cm² @ 1064nm, 20ns 20Hz

5. FINE GRIND SURFACE

6. POWER, IRREGULARITY, AND SURFACE QUALITY SPECIFICATIONS
APPLY ACROSS CLEAR APERTURE
7. FOCAL LENGTH (EFL): 150.00 mm±1%
BACK FOCAL LENGTH (BFL): 147.82 mm

**FOR INFORMATION ONLY:
DO NOT MANUFACTURE
PARTS TO THIS DRAWING**



SECTION A-A

	S1	S2
SHAPE	CONVEX	PLANO
RADIUS	68.79	INFINITY
SURFACE ACCURACY (P-V)	$\lambda/20$	$\lambda/20$
SURFACE QUALITY	20-10	20-10
MIN CLEAR APERTURE	Ø22.50	Ø22.50
MIN COATING APERTURE	N/A	N/A
BEVEL	PROTECTIVE AS NEEDED	PROTECTIVE AS NEEDED

SPECIFICATIONS SUBJECT TO CHANGE WITHOUT NOTICE
DIMENSIONS ARE FOR REFERENCE ONLY

Edmund Optics®



ALL DIMS IN

mm

TITLE

25mm Dia. x 150mm FL, 1064nm Laser V-Coat, $\lambda/20$ PCX Lens

DWG NO

38777

SHEET
1 OF 1