

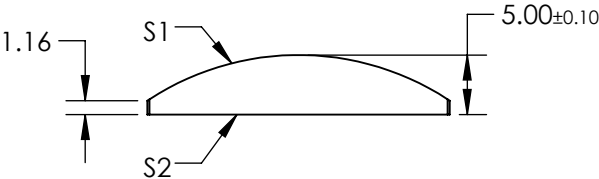
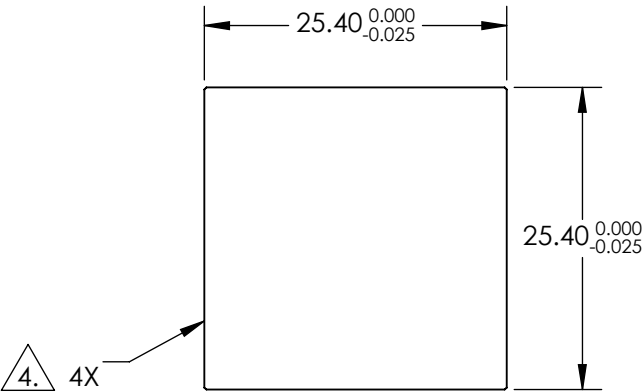
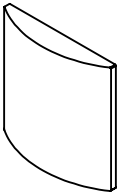
NOTES:

1. SUBSTRATE
UV GRADE FUSED SILICA
2. CENTERING TOLERANCE:
PLANO AXIS WEDGE: <3 ARCMIN
POWER AXIS WEDGE: <4.5 ARCMIN
AXIAL TWIST: <3 ARCMIN

3. COATING (APPLY ACROSS COATING APERTURE)
S1 & S2: 355nm AR Coated
R(ABS) < 0.25% @ 355nm @ 0° AOI
- DAMAGE THRESHOLD
PULSED: 7.5 J/cm², 20ns, 20 Hz @ 355nm

4. FINE GROUND SURFACE


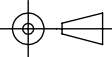
5. RoHS COMPLIANT



**FOR INFORMATION ONLY:
DO NOT MANUFACTURE
PARTS TO THIS DRAWING**

	S1	S2
SHAPE	CONVEX	PLANO
RADIUS	22.93	INFINITY
SURFACE QUALITY	20 - 10	20 - 10
CLEAR APERTURE	22.86 x 22.86	22.86 x 22.86
COATING APERTURE	24.40 x 24.40	24.40 x 24.40
POWER AT 632.8nm	1.50 WAVES	1.50 WAVES
IRREGULARITY AT 632.8nm	0.25 WAVES	0.25 WAVES
BEVEL	PROTECTIVE AS NEEDED	PROTECTIVE AS NEEDED

SPECIFICATIONS SUBJECT TO CHANGE WITHOUT NOTICE
DIMENSIONS ARE FOR REFERENCE ONLY

EFL	50.00	 Edmund Optics®		
BFL	46.58			
THIRD ANGLE PROJECTION 		TITLE	BEAM SHAPING CYLINDER LENS, FUSED SILICA, 25.4mm SQ X 50mm EFL, AR COATED	
ALL DIMS IN	mm	DWG NO	37583	SHEET 1 OF 1