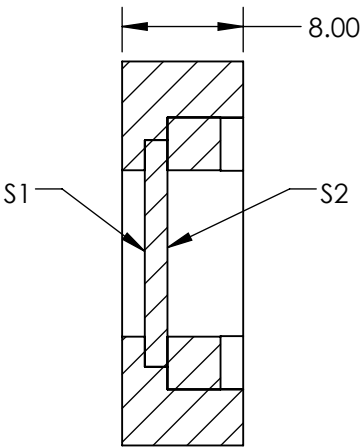
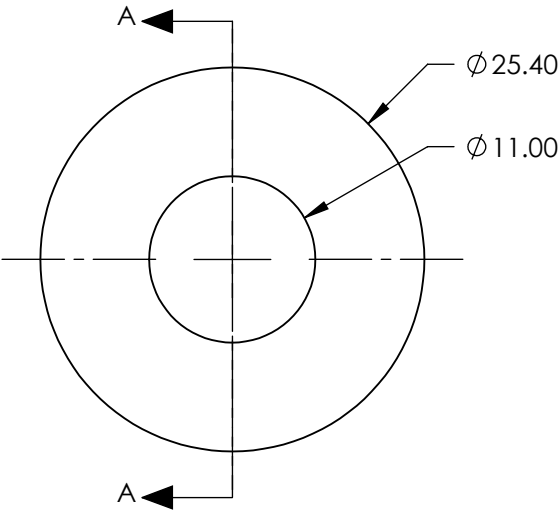


- NOTES:
- 1. SUBSTRATE:
Cadmium Thiogallate
 - 2. SURFACE S1 TO BE PARALLEL TO SURFACE S2 TO WITHIN <3 ARCMINS
 - 3. RETARDANCE: $\lambda/4 \pm \lambda/40$ @ 20°C
 - 4. DESIGN WAVELENGTH: 9000nm
 - 5. TRANSMITTED WAVEFRONT: $<\lambda/4$ @ 632.8nm
 - 6. CONSTRUCTION: Crystalline
 - 7. ROHS: EXEMPT



SECTION A-A

SPECIFICATIONS SUBJECT TO CHANGE WITHOUT NOTICE
DIMENSIONS ARE FOR REFERENCE ONLY

**FOR INFORMATION ONLY:
DO NOT MANUFACTURE
PARTS TO THIS DRAWING**

EO® Edmund Optics®

S1		S2		THIRD ANGLE PROJECTION		TITLE		9µm λ/4 MWIR Zero Order Waveplate	
CLEAR APERTURE	Ø10.0		Ø10.0	ALL DIMS IN	mm	DWG NO	85116	SHEET 1 OF 1	