

NOTES:

- 1. SUBSTRATE
Fused Silica
- 2. COATING (APPLY ACROSS CLEAR APERTURE)
S1: P-POLARIZATION TRANSMISSION EFFICIENCY: >98%
EXTINCTION RATIO: 10000:1

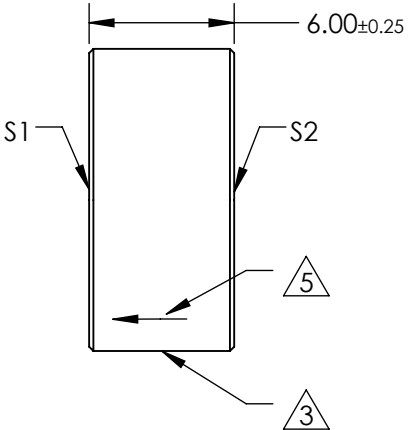
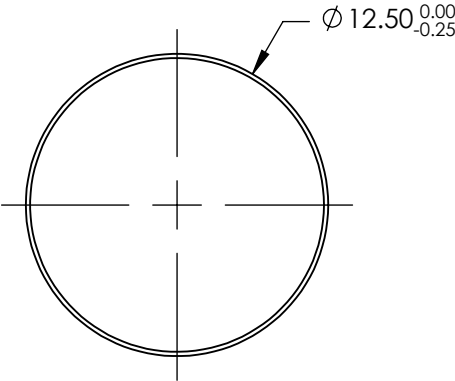
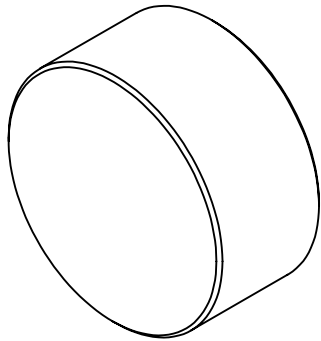
3 FINE GROUND SURFACE

- 4. POWER, IRREGULARITY, SURFACE QUALITY, AND COATING SPECIFICATIONS APPLY ACROSS CLEAR APERTURE

5 APPLY ARROW ON EDGE WITH PENCIL OR PERMANENT INK TOWARDS S1

- 6. DESIGN WAVELENGTH: 1064nm

- 7. RoHS: COMPLIANT



**FOR INFORMATION ONLY:
DO NOT MANUFACTURE
PARTS TO THIS DRAWING**

SPECIFICATIONS SUBJECT TO CHANGE WITHOUT NOTICE
DIMENSIONS ARE FOR REFERENCE ONLY

	S1	S2
TRANSMITTED WAVEFRONT	$\lambda/4$ @ 633nm	$\lambda/4$ @ 633nm
ANGLE OF INCIDENCE (°)	45 ±2	45 ±2
SHAPE	PLANO	PLANO
SURFACE QUALITY	40-20	40-20
CLEAR APERTURE	Ø11.25	Ø11.25
BEVEL	PROTECTIVE AS NEEDED	PROTECTIVE AS NEEDED



ALL DIMS IN

mm



Edmund Optics®

TITLE

1064nm, 12.5mm DIAMETER, THIN-FILM LASER
LINE POLARIZERS

DWG NO

86715

SHEET
1 OF 1