
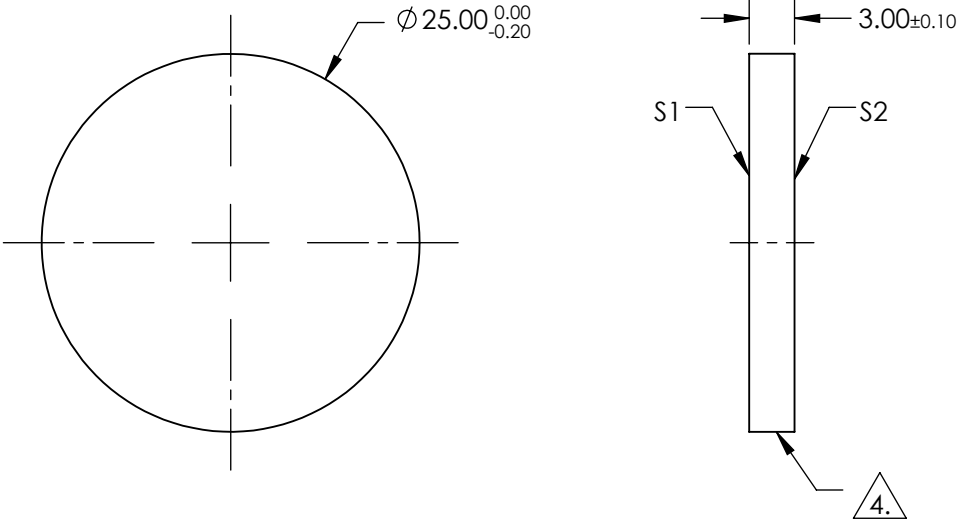


- NOTES:
- SUBSTRATE:
UV FUSED SILICA
 - SURFACE S2 TO BE PARALLEL TO SURFACE S1 TO WITHIN < 5 ARCSECS
 - COATING (APPLY ACROSS COATING APERTURE):


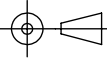
S1 & S2:
R(AVG): < 0.5% 1900nm-2100nm AT 0° AOI
R(AVG): < 0.1% 1940nm-1950nm AT 0° AOI
R(AVG): < 0.25% 2000nm-2100nm AT 0° AOI
 -  FINE GRIND SURFACE
 - RoHS: COMPLIANT

**FOR INFORMATION ONLY:
DO NOT MANUFACTURE
PARTS TO THIS DRAWING**



SPECIFICATIONS SUBJECT TO CHANGE WITHOUT NOTICE
DIMENSIONS ARE FOR REFERENCE ONLY

| | S1 | S2 |
|-----------------|----------------------|----------------------|
| SHAPE | PLANO | PLANO |
| CLEAR APERTURE | Ø20.00 | Ø20.00 |
| SURFACE QUALITY | 20-10 | 20-10 |
| BEVEL | PROTECTIVE AS NEEDED | PROTECTIVE AS NEEDED |

| | | | |
|--|----|--------|--|
|  Edmund Optics® | | | |
| THIRD ANGLE PROJECTION  | | TITLE | λ/10 FUSED SILICA WINDOW Ø25mm 2µm AR COATED |
| ALL DIMS IN | mm | DWG NO | 37545 |
| | | | SHEET 1 OF 1 |