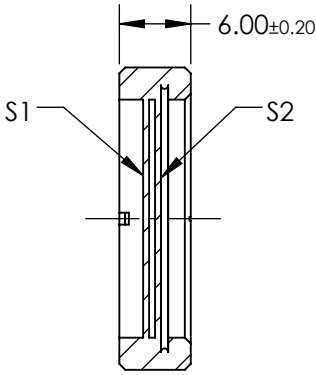
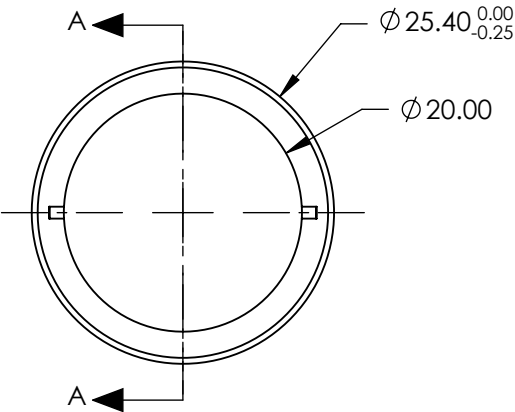


NOTES:

- 1. SUBSTRATE:
Crystal Quartz and MgF2
- 2. COATING (APPLY ACROSS COATING APERTURE):
S1 & S2: R(AVG) <0.75% @ 900 - 2100nm

DAMAGE THRESHOLD,
PULSED: >5 J/cm², 10ns @ 10Hz @ 1064nm
- 3. SURFACE S1 TO BE PARALLEL TO SURFACE S2 TO WITHIN <10 ARCSEC
- 4. RETARDANCE: $\lambda/2 \pm \lambda/100$ @ 20°C
- 5. DESIGN WAVELENGTH: 900 - 2100 nm
- 6. TRANSMITTED WAVEFRONT: < $\lambda/4$ @ 632nm
- 7. CONSTRUCTION: Crystalline
- 8. ROHS: COMPLIANT



SECTION A-A

**FOR INFORMATION ONLY:
DO NOT MANUFACTURE
PARTS TO THIS DRAWING**

SPECIFICATIONS SUBJECT TO CHANGE WITHOUT NOTICE
DIMENSIONS ARE FOR REFERENCE ONLY

EO® **Edmund Optics®**

| | S1 | S2 |
|-----------------|-------|-------|
| SURFACE QUALITY | 40-20 | 40-20 |
| CLEAR APERTURE | >Ø20 | >Ø20 |

| | | | | |
|--|----|--------|--|--------------|
| THIRD ANGLE PROJECTION  | | TITLE | 25.4mm Dia, 900 - 2100nm, $\lambda/2$ Achromatic Waveplate | |
| ALL DIMS IN | mm | DWG NO | 39051 | SHEET 1 OF 1 |