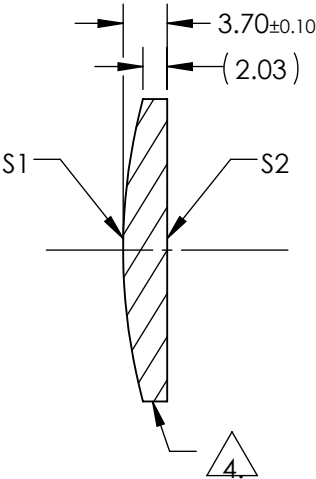
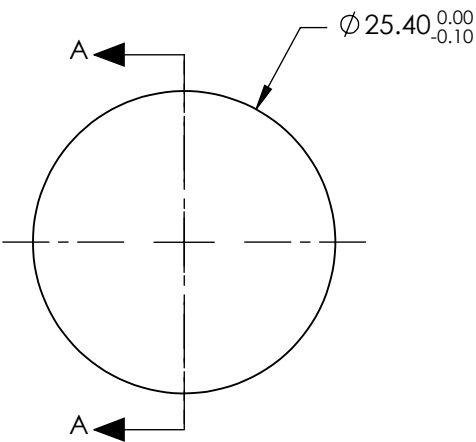


NOTES:


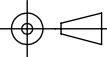
1. SUBSTRATE:
II-VI Infrared ZnSe
2. CENTERING TOLERANCE:
EDGE THICKNESS VARIATION MEASURED AT THE CLEAR APERTURE OF S1
NOT TO EXCEED 12.7µm
3. COATING (APPLY ACROSS COATING APERTURE)
BBAR (3000-12000nm)
S1 & S2: R(AVG) ≤3.0% @ 3 - 12µm
4. FINE GROUND SURFACE
5. POWER, IRREGULARITY, AND SURFACE QUALITY SPECIFICATIONS APPLY
ACROSS CLEAR APERTURE
6. WAVELENGTH RANGE: 3000 - 12000nm
7. SURFACE ROUGHNESS: <50 Å
8. ROHS: COMPLIANT

**FOR INFORMATION ONLY:
DO NOT MANUFACTURE
PARTS TO THIS DRAWING**



SECTION A-A

SPECIFICATIONS SUBJECT TO CHANGE WITHOUT NOTICE
DIMENSIONS ARE FOR REFERENCE ONLY

	S1	S2				
SHAPE	CONVEX	PLANO				
RADIUS	49.100	INFINITY	EFL (AT 10.6 microns)	35.00	 Edmund Optics®	
SURFACE QUALITY	40-20	40-20	BFL (AT 10.6 microns)	33.46		
CLEAR APERTURE	90%	90%			TITLE	25.4mm Dia. x 35mm FL, 3-12µm BBAR Coated, ZnSe Plano-Convex Lens
POWER at 10.6µm	λ/10	λ/10			DWG NO	11424
IRREGULARITY at 10.6µm	λ/20	λ/20				
BEVEL	PROTECTIVE AS NEEDED	PROTECTIVE AS NEEDED	ALL DIMS IN	mm		SHEET 1 OF 1