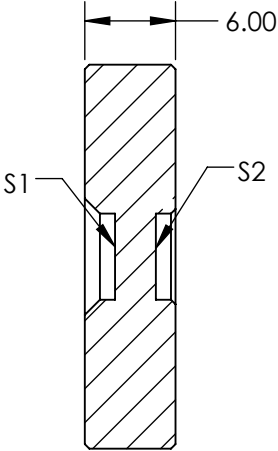
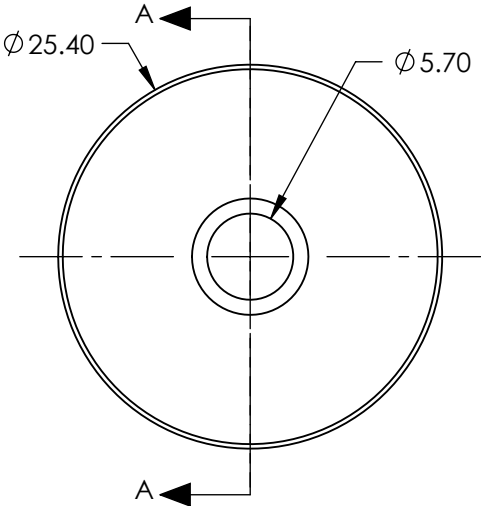
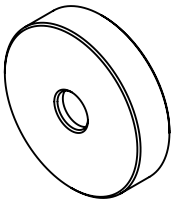


NOTES:

- 1. CRYSTAL TYPE: BBO
- 2. SURFACE S2 TO BE PARALLEL TO SURFACE S1 TO WITHIN <20 ARCSEC
- 3. COATING (APPLY ACROSS COATING APERTURE)  
DAMAGE THRESHOLD, PULSED: >1 GW/cm² @ 1064nm, 10ns  
S1: 400 - 800nm BROADBAND PROTECTIVE COATING  
S2: 400 - 800nm BROADBAND PROTECTIVE COATING
- 4. ORIENTATION (Θ/φ)°: 29.2/90
- 5. RoHS: COMPLIANT



SECTION A-A

**FOR INFORMATION ONLY:  
DO NOT MANUFACTURE  
PARTS TO THIS DRAWING**

SPECIFICATIONS SUBJECT TO CHANGE WITHOUT NOTICE  
DIMENSIONS ARE FOR REFERENCE ONLY

	S1	S2	<div><div><div>EO<sup>®</sup></div><div>Edmund Optics<sup>®</sup></div></div></div>			
SHAPE	PLANO	PLANO	<div>THIRD ANGLE PROJECTION</div>	<div>TITLE</div> <div>6 x 6 x 0.5mm, 800nm SHG, TYPE I BBO NONLINEAR CRYSTAL</div>		
SURFACE FLATNESS	λ/8	λ/8				
SURFACE QUALITY	20-10	20-10				
CLEAR APERTURE	Ø5.70	Ø5.70				
BEVEL	PROTECTIVE AS NEEDED	PROTECTIVE AS NEEDED				
			ALL DIMS IN	mm	DWG NO	11167
					SHEET 1 OF 1	