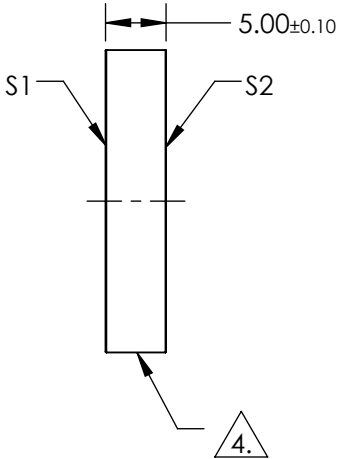
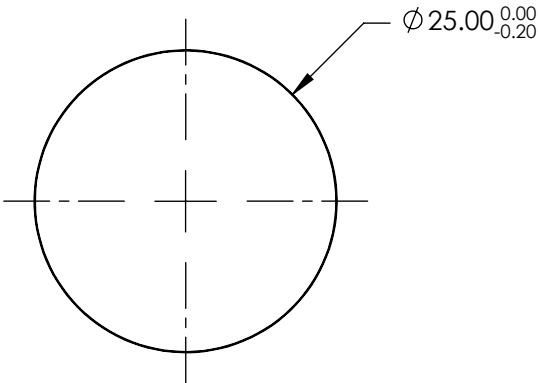

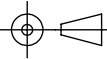


- NOTES:
- 1. SUBSTRATE:  
UV GRADE FUSED SILICA
  - 2. COATING (APPLY ACROSS COATING APERTURE):  
S1 & S2: UV-AR (250-425nm)  
R(ABS) ≤1.0% @ 250 - 425nm  
R(AVG) ≤0.75% @ 250 - 425nm  
R(AVG) ≤0.5% @ 370 - 420nm
  - 3. SURFACE S2 TO BE PARALLEL TO SURFACE S1 TO WITHIN <5 ARCSEC
  - 4. FINE GRIND SURFACE
  - 5. ROHS COMPLIANT



**FOR INFORMATION ONLY:  
DO NOT MANUFACTURE  
PARTS TO THIS DRAWING**

SPECIFICATIONS SUBJECT TO CHANGE WITHOUT NOTICE  
DIMENSIONS ARE FOR REFERENCE ONLY

		S1	S2	 Edmund Optics®		
SHAPE		PLANO	PLANO		TITLE	25mm Dia., 5mm Thick, UV-AR Coated λ/10 Fused Silica Window
SURFACE QUALITY		20-10	20-10			
CLEAR APERTURE		Ø20.00	Ø20.00	ALL DIMS IN	DWG NO	11881
BEVEL		PROTECTIVE AS NEEDED	PROTECTIVE AS NEEDED	mm		SHEET 1 OF 1