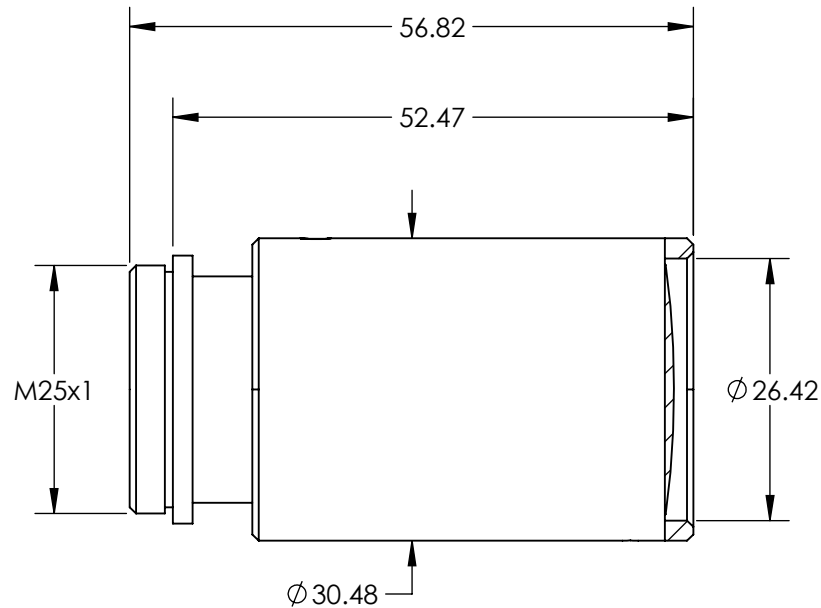
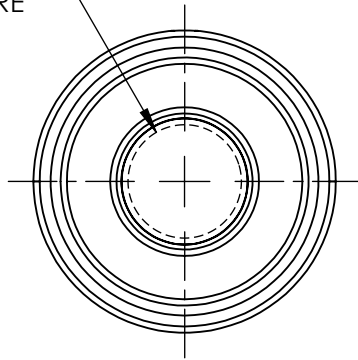


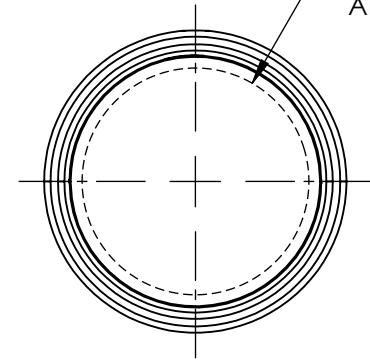
NOTES:

1. SUBSTRATE:
ZnSe
2. COATING (APPLY ACROSS COATING APERTURE)
HIGH-EFFICIENCY ANTI-REFLECTIVE COATING (10.6μm)
R(ABS) <0.2% @ 10.6μm @ 0° AOI
3. ROHS COMPLIANT

Ø 11.43
ENTRANCE
APERTURE



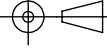
Ø 22.86
EXIT
APERTURE



SPECIFICATIONS SUBJECT TO CHANGE WITHOUT NOTICE
DIMENSIONS ARE FOR REFERENCE ONLY

**FOR INFORMATION ONLY:
DO NOT MANUFACTURE
PARTS TO THIS DRAWING**

EO[®] Edmund Optics[®]

THIRD ANGLE PROJECTION 		TITLE	4X, CO2 Beam Expander	
ALL DIMS IN	mm	DWG NO	11364	SHEET 1 OF 1