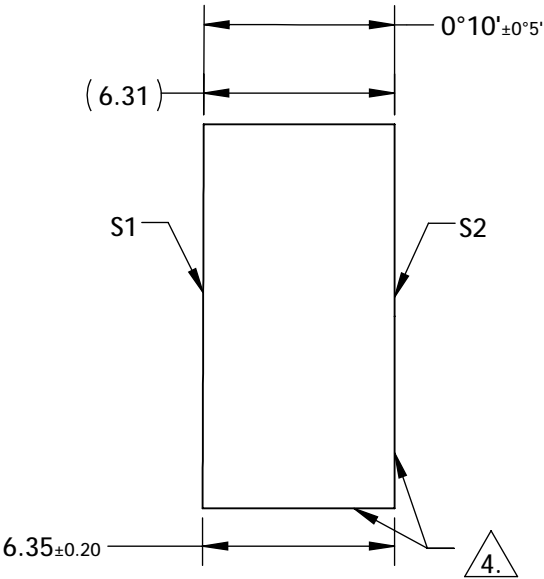
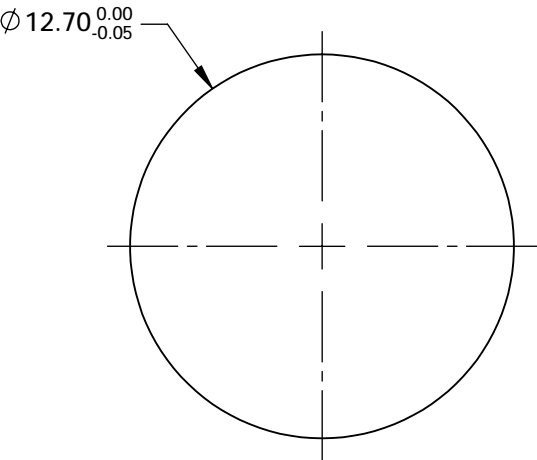


NOTES:

- 1. SUBSTRATE: FUSED SILICA
- 2. SURFACE S1 TO BE PARALLEL TO SURFACE S2 TO WITHIN <10 ARCMIN
- 3. COATING (APPLY ACROSS COATING APERTURE)
S1:R(AVG) > 99.8% @ 780 - 830nm @ 5° AOI (P-POLARIZATION)
R(ABS) > 99.9% @ 800nm @ 5° AOI (TYPICAL, P-POLARIZATION)
GDD = -1300 fs²

S2: NONE

DAMAGE THRESHOLD: 0.3 J/cm² @ 800nm, 50fs, 1kHz, 100µm BEAM DIAMETER
- 4. COMMERCIAL POLISHED SURFACE
- 5. RoHS: COMPLIANT



**FOR INFORMATION ONLY:
DO NOT MANUFACTURE
PARTS TO THIS DRAWING**

SPECIFICATIONS SUBJECT TO CHANGE WITHOUT NOTICE
DIMENSIONS ARE FOR REFERENCE ONLY

	S1	S2
SHAPE	PLANO	PLANO
IRREGULARITY	λ/10	λ/10
CLEAR APERTURE	Ø10.16	Ø10.16
BEVEL	PROTECTIVE AS NEEDED	PROTECTIVE AS NEEDED



ALL DIMS IN

mm

EO® **Edmund Optics®**

TITLE

12.7mm 5°, 800nm Highly-Dispersive Ultrafast Mirror

DWG NO

12330

SHEET
1 OF 1