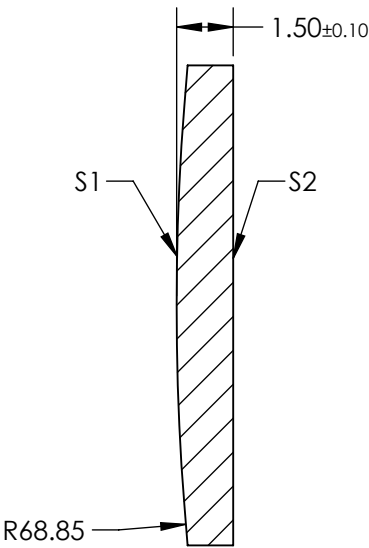
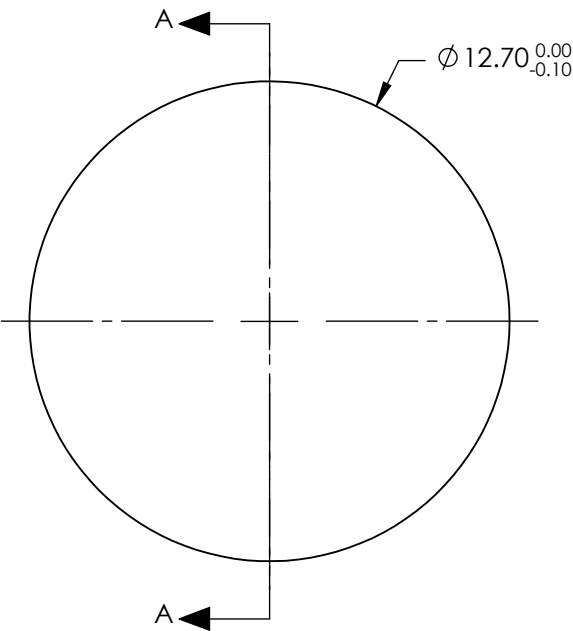


NOTES:

- 1. SUBSTRATE: FUSED SILICA
- 2. COATING:
S1 & S2: R(ABS) <0.5% @ 370 - 550nm @ 45° AOI
- 3. CENTERING: < 3 ARCMIN
- 4. RoHS: COMPLIANT


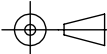
FOR INFORMATION ONLY:
DO NOT MANUFACTURE
PARTS TO THIS DRAWING



SECTION A-A

SPECIFICATIONS SUBJECT TO CHANGE WITHOUT NOTICE
DIMENSIONS ARE FOR REFERENCE ONLY

	S1	S2
SHAPE	CONVEX	PLANO
SURFACE QUALITY	20-10	20-10
CLEAR APERTURE	Ø11.43	Ø11.43
BEVEL	PROTECTIVE AS NEEDED	PROTECTIVE AS NEEDED

EFL: 150.17mm		 Edmund Optics®	
BFL: 149.15mm			
		TITLE	12.7mm Diameter x 150mm FL, 370-550nm Coated, Ultrafast Thin PCX Lens
ALL DIMS IN	mm	DWG NO	11675
			SHEET 1 OF 1