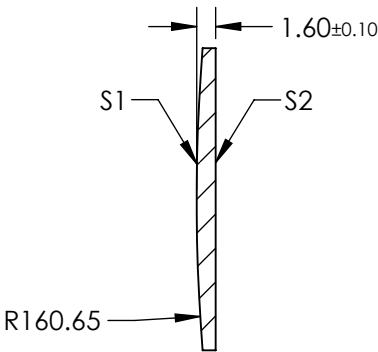
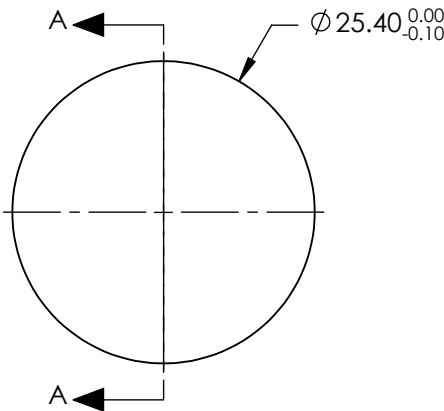


NOTES:

- 1. SUBSTRATE: FUSED SILICA
- 2. COATING:  
S1 & S2: R(ABS) <0.5% @ 370 - 550nm
- 3. CENTERING: < 3 ARCMIN
- 4. RoHS: COMPLIANT

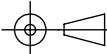
FOR INFORMATION ONLY:  
DO NOT MANUFACTURE  
PARTS TO THIS DRAWING



SECTION A-A

SPECIFICATIONS SUBJECT TO CHANGE WITHOUT NOTICE  
DIMENSIONS ARE FOR REFERENCE ONLY

	S1	S2
SHAPE	CONVEX	PLANO
SURFACE QUALITY	20-10	20-10
CLEAR APERTURE	Ø22.86	Ø22.86
BEVEL	PROTECTIVE AS NEEDED	PROTECTIVE AS NEEDED

EFL: 350.41mm		<div><div><div></div><div></div></div><sup>®</sup> Edmund Optics<sup>®</sup></div>		
BFL: 349.31mm				
<div>THIRD ANGLE PROJECTION</div> <div></div>		<div>TITLE</div>	25.4mm Diameter x 350mm FL, 370-550nm Coated, Ultrafast Thin PCX Lens	
ALL DIMS IN	mm	DWG NO	11682	SHEET 1 OF 1