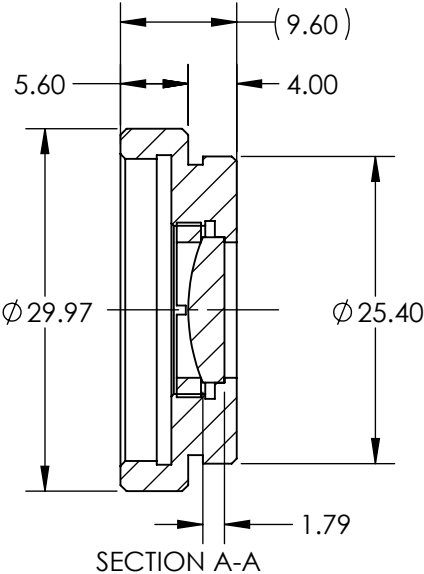
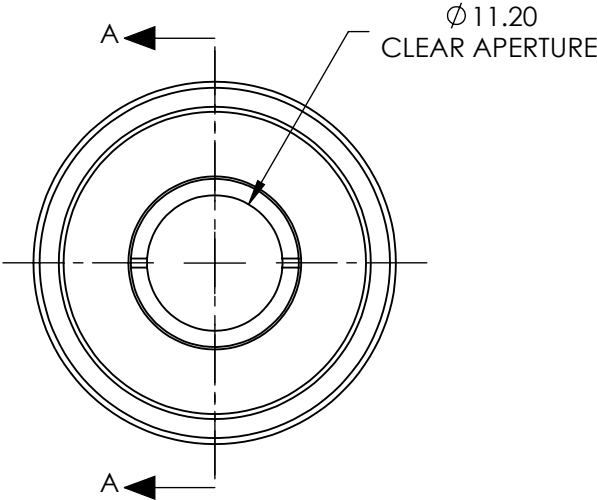


NOTES:

1. SUBSTRATE:
N-BK7
2. ROHS COMPLIANT
3. COATING (APPLY ACROSS COATING APERTURE)
S1 & S2: MgF2 (400-700nm)
R(AVG) ≤1.75% @ 400 - 700nm
4. FOCAL LENGTH (EFL): 30.00 ±1 %
FOCAL LENGTH (BFL) FROM MECHANICAL HOUSING: 27.02
5. LENS INCLUDED: #45-086
MOUNT INCLUDED: #54-615

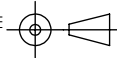
**FOR INFORMATION ONLY:
DO NOT MANUFACTURE
PARTS TO THIS DRAWING**



SPECIFICATIONS SUBJECT TO CHANGE WITHOUT NOTICE
DIMENSIONS ARE FOR REFERENCE ONLY

	S1	S2
SHAPE	CONVEX	PLANO
RADIUS	15.50	INFINITY
SURFACE QUALITY	40-20	40-20
POWER AT 632.8nm	1.5 λ	1.5 λ
IRREGULARITY AT 632.8nm	$\lambda/4$	$\lambda/4$

THIRD ANGLE
PROJECTION



ALL DIMS IN

mm



Edmund Optics®

TITLE

11.2mm CA, 30mm FL, Mounted MgF2
Coated Plano-Convex Lens

DWG NO

12918

SHEET
1 OF 1