

**FOR INFORMATION ONLY:
DO NOT MANUFACTURE
PARTS TO THIS DRAWING**

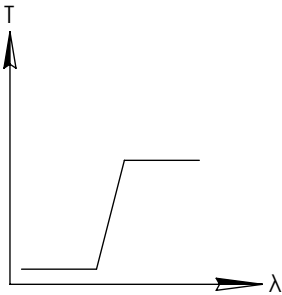
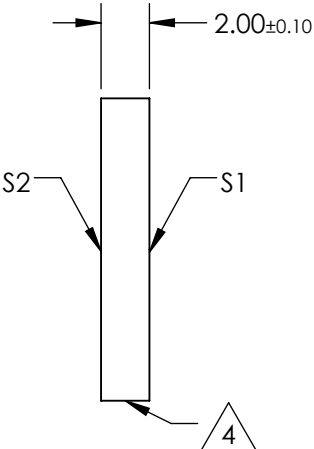
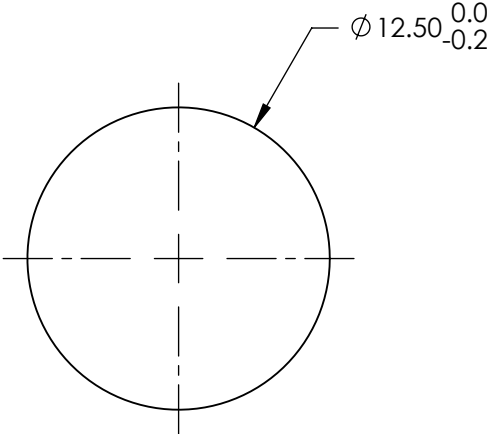
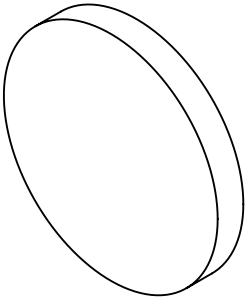
NOTES:

- SUBSTRATE
- SURFACE S2 TO BE PARALLEL WITH SURFACE S1 TO WITHIN 5 arcsec
- COATING (APPLY ACROSS COATING APERTURE)
S1: HARD DIELECTRIC SPUTTERED
T(avg): ≥91% FROM 408 - 1650nm @ 0° AOI
T(avg): ≤0.01% FROM 200 - 390nm @ 0° AOI
T(abs): =50% FOR 400±4nm @ 0° AOI

S2:SINGLE LAYER MgF2

4. FINE GRIND SURFACE

- POWER, IRREGULARITY, AND SURFACE QUALITY SPECIFICATIONS
APPLY ACROSS CLEAR APERTURE
- TRANSMITTED WAVEFRONT DISTORTION, RMS: ≤λ/4 @ 633nm
- ROHS COMPLIANT



LONGPASS FILTER

SPECIFICATIONS SUBJECT TO CHANGE WITHOUT NOTICE
DIMENSIONS ARE FOR REFERENCE ONLY

REV A	S1	S2
SHAPE	PLANO	PLANO
SURFACE QUALITY	40-20	40-20
CLEAR APERTURE	>80%	>80%
BEVEL	PROTECTIVE AS NEEDED	PROTECTIVE AS NEEDED

THIRD ANGLE PROJECTION		Edmund Optics®	
TITLE		Ø12.5mm, 400nm, HIGH PERFORMANCE LONGPASS FILTER	
ALL DIMS IN	mm	DWG NO	62974
			SHEET 1 OF 1

**FOR INFORMATION ONLY:
DO NOT MANUFACTURE
PARTS TO THIS DRAWING**

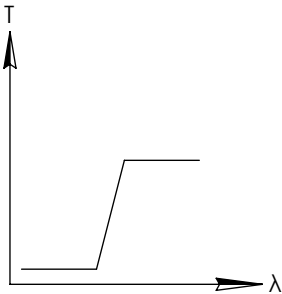
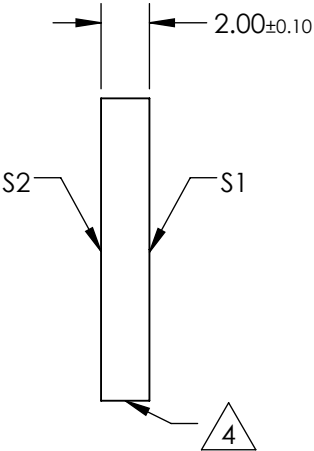
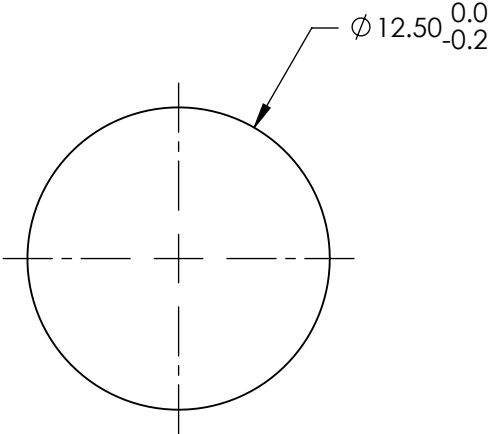
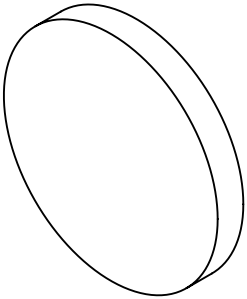
NOTES:

1. SUBSTRATE
2. SURFACE S2 TO BE PARALLEL WITH SURFACE S1 TO WITHIN 5 arcsec
3. COATING (APPLY ACROSS COATING APERTURE)
S1: HARD DIELECTRIC SPUTTERED
T(avg): ≥91% FROM 458 - 1650nm @ 0° AOI
T(avg): ≤0.01% FROM 200 - 440nm @ 0° AOI
T(abs): =50% FOR 450±4.5nm @ 0° AOI

S2:SINGLE LAYER MgF2

4. FINE GRIND SURFACE

5. POWER, IRREGULARITY, AND SURFACE QUALITY SPECIFICATIONS
APPLY ACROSS CLEAR APERTURE
6. TRANSMITTED WAVEFRONT DISTORTION, RMS: ≤λ/4 @ 633nm
7. ROHS COMPLIANT



LONGPASS FILTER

SPECIFICATIONS SUBJECT TO CHANGE WITHOUT NOTICE
DIMENSIONS ARE FOR REFERENCE ONLY

REV A	S1	S2
SHAPE	PLANO	PLANO
SURFACE QUALITY	40-20	40-20
CLEAR APERTURE	>80%	>80%
BEVEL	PROTECTIVE AS NEEDED	PROTECTIVE AS NEEDED

THIRD ANGLE PROJECTION		Edmund Optics®	
ALL DIMS IN mm		TITLE	Ø12.5mm, 450nm, HIGH PERFORMANCE LONGPASS FILTER
DWG NO		62975	SHEET 1 OF 1

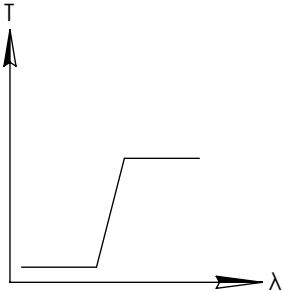
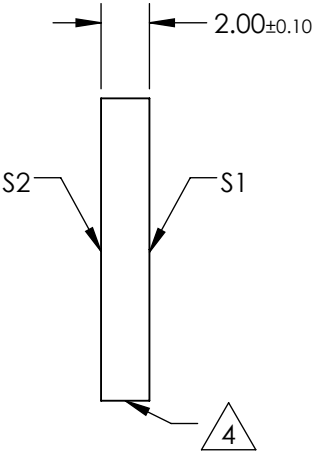
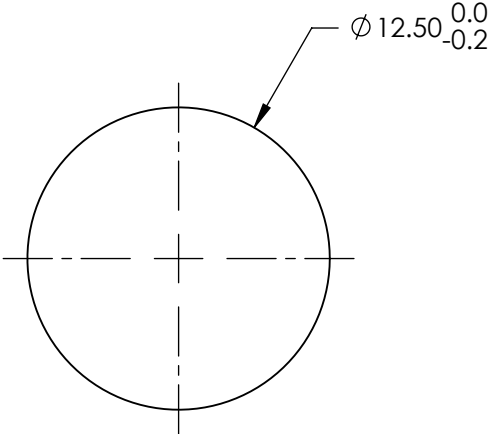
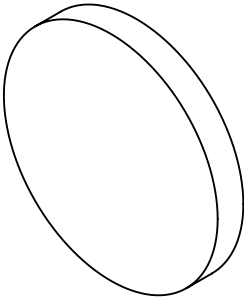
**FOR INFORMATION ONLY:
DO NOT MANUFACTURE
PARTS TO THIS DRAWING**

NOTES:

- 1. SUBSTRATE
- 2. SURFACE S2 TO BE PARALLEL WITH SURFACE S1 TO WITHIN 5 arcsec
- 3. COATING (APPLY ACROSS COATING APERTURE)
S1: HARD DIELECTRIC SPUTTERED
T(avg): ≥91% FROM 508 - 1650nm @ 0° AOI
T(avg): ≤0.01% FROM 200 - 490nm @ 0° AOI
T(abs): =50% FOR 500±5nm @ 0° AOI
S2:SINGLE LAYER MgF2

4. FINE GRIND SURFACE

- 5. POWER, IRREGULARITY, AND SURFACE QUALITY SPECIFICATIONS
APPLY ACROSS CLEAR APERTURE
- 6. TRANSMITTED WAVEFRONT DISTORTION, RMS: ≤λ/4 @ 633nm
- 7. ROHS COMPLIANT



LONGPASS FILTER

SPECIFICATIONS SUBJECT TO CHANGE WITHOUT NOTICE
DIMENSIONS ARE FOR REFERENCE ONLY

REV A	S1	S2
SHAPE	PLANO	PLANO
SURFACE QUALITY	40-20	40-20
CLEAR APERTURE	>80%	>80%
BEVEL	PROTECTIVE AS NEEDED	PROTECTIVE AS NEEDED

THIRD ANGLE PROJECTION		Edmund Optics®	
ALL DIMS IN		TITLE	Ø12.5mm, 500nm, HIGH PERFORMANCE LONGPASS FILTER
mm		DWG NO	62976
			SHEET 1 OF 1

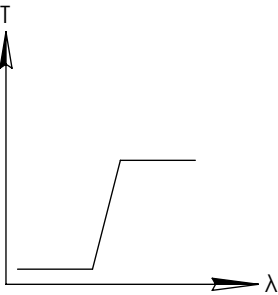
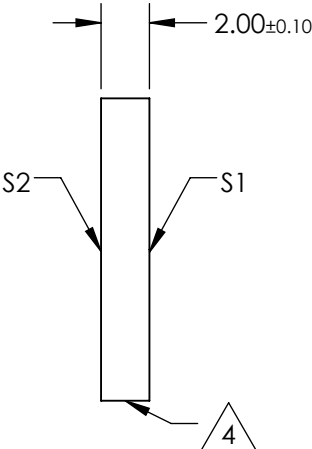
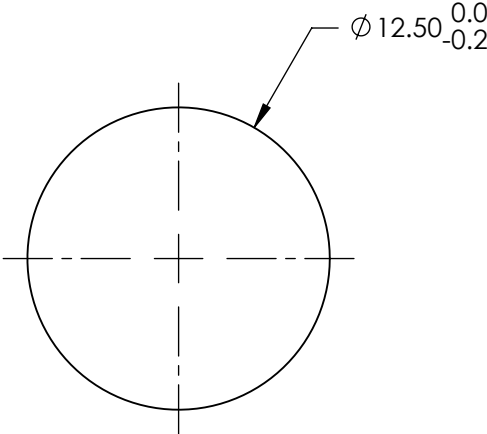
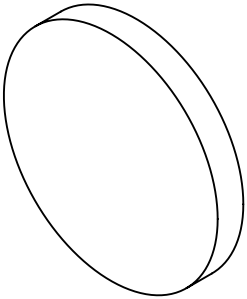
**FOR INFORMATION ONLY:
DO NOT MANUFACTURE
PARTS TO THIS DRAWING**

NOTES:

- 1. SUBSTRATE
- 2. SURFACE S2 TO BE PARALLEL WITH SURFACE S1 TO WITHIN 5 arcsec
- 3. COATING (APPLY ACROSS COATING APERTURE)
 - S1: HARD DIELECTRIC SPUTTERED
 - T(avg): ≥91% FROM 560 - 1650nm @ 0° AOI
 - T(avg): ≤0.01% FROM 200 - 539nm @ 0° AOI
 - T(abs): =50% FOR 550±5.5nm @ 0° AOI
 - S2:SINGLE LAYER MgF2

4. FINE GRIND SURFACE

- 5. POWER, IRREGULARITY, AND SURFACE QUALITY SPECIFICATIONS
APPLY ACROSS CLEAR APERTURE
- 6. TRANSMITTED WAVEFRONT DISTORTION, RMS: ≤λ/4 @ 633nm
- 7. ROHS COMPLIANT



LONGPASS FILTER

SPECIFICATIONS SUBJECT TO CHANGE WITHOUT NOTICE
DIMENSIONS ARE FOR REFERENCE ONLY

REV A	S1	S2
SHAPE	PLANO	PLANO
SURFACE QUALITY	40-20	40-20
CLEAR APERTURE	>80%	>80%
BEVEL	PROTECTIVE AS NEEDED	PROTECTIVE AS NEEDED

THIRD ANGLE PROJECTION		Edmund Optics®	
ALL DIMS IN mm		TITLE	Ø12.5mm, 550nm, HIGH PERFORMANCE LONGPASS FILTER
DWG NO		62977	SHEET 1 OF 1

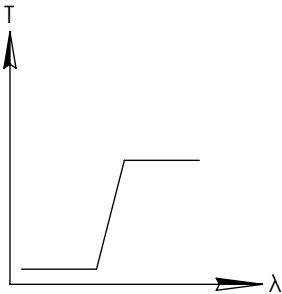
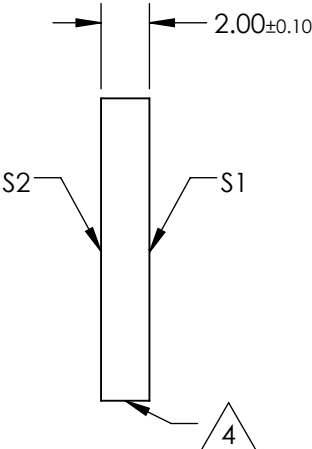
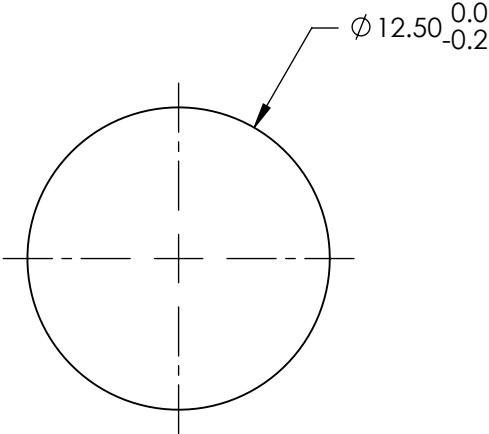
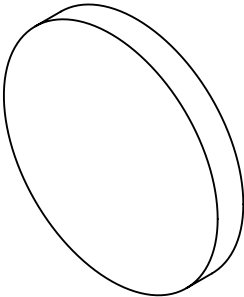
**FOR INFORMATION ONLY:
DO NOT MANUFACTURE
PARTS TO THIS DRAWING**

NOTES:

- 1. SUBSTRATE
- 2. SURFACE S2 TO BE PARALLEL WITH SURFACE S1 TO WITHIN 5 arcsec
- 3. COATING (APPLY ACROSS COATING APERTURE)
 - S1: HARD DIELECTRIC SPUTTERED
 - T(avg): ≥91% FROM 610 - 1650nm @ 0° AOI
 - T(avg): ≤0.01% FROM 200 - 588nm @ 0° AOI
 - T(abs): =50% FOR 600±6nm @ 0° AOI
 - S2:SINGLE LAYER MgF2

4. FINE GRIND SURFACE

- 5. POWER, IRREGULARITY, AND SURFACE QUALITY SPECIFICATIONS
APPLY ACROSS CLEAR APERTURE
- 6. TRANSMITTED WAVEFRONT DISTORTION, RMS: ≤λ/4 @ 633nm
- 7. ROHS COMPLIANT



LONGPASS FILTER

SPECIFICATIONS SUBJECT TO CHANGE WITHOUT NOTICE
DIMENSIONS ARE FOR REFERENCE ONLY

REV A	S1	S2
SHAPE	PLANO	PLANO
SURFACE QUALITY	40-20	40-20
CLEAR APERTURE	>80%	>80%
BEVEL	PROTECTIVE AS NEEDED	PROTECTIVE AS NEEDED

THIRD ANGLE PROJECTION		Edmund Optics®	
ALL DIMS IN mm		TITLE	Ø12.5mm, 600nm, HIGH PERFORMANCE LONGPASS FILTER
		DWG NO	62978
		SHEET 1 OF 1	

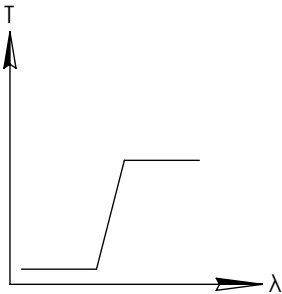
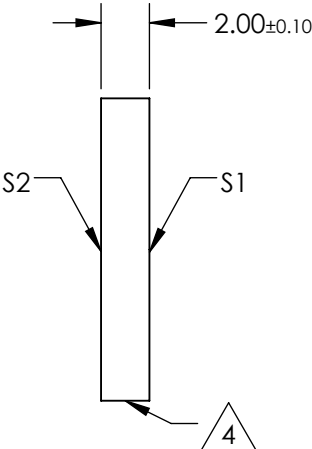
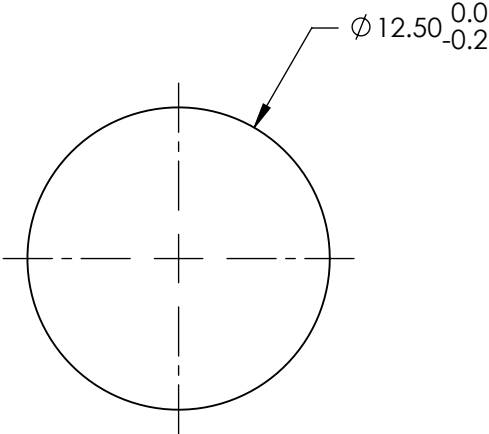
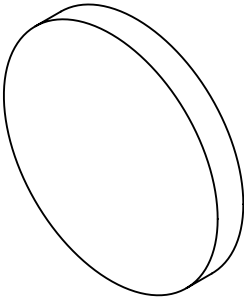
**FOR INFORMATION ONLY:
DO NOT MANUFACTURE
PARTS TO THIS DRAWING**

NOTES:

- 1. SUBSTRATE
- 2. SURFACE S2 TO BE PARALLEL WITH SURFACE S1 TO WITHIN 5 arcsec
- 3. COATING (APPLY ACROSS COATING APERTURE)
S1: HARD DIELECTRIC SPUTTERED
T(avg): ≥91% FROM 660 - 1650nm @ 0° AOI
T(avg): ≤0.01% FROM 200 - 637nm @ 0° AOI
T(abs): =50% FOR 650±6.5nm @ 0° AOI
- S2:SINGLE LAYER MgF2

4. FINE GRIND SURFACE

- 5. POWER, IRREGULARITY, AND SURFACE QUALITY SPECIFICATIONS
APPLY ACROSS CLEAR APERTURE
- 6. TRANSMITTED WAVEFRONT DISTORTION, RMS: ≤λ/4 @ 633nm
- 7. ROHS COMPLIANT



LONGPASS FILTER

SPECIFICATIONS SUBJECT TO CHANGE WITHOUT NOTICE
DIMENSIONS ARE FOR REFERENCE ONLY

REV A	S1	S2
SHAPE	PLANO	PLANO
SURFACE QUALITY	40-20	40-20
CLEAR APERTURE	>80%	>80%
BEVEL	PROTECTIVE AS NEEDED	PROTECTIVE AS NEEDED

THIRD ANGLE PROJECTION		Edmund Optics®	
ALL DIMS IN mm		TITLE	Ø12.5mm, 650nm, HIGH PERFORMANCE LONGPASS FILTER
		DWG NO	62979
		SHEET 1 OF 1	

**FOR INFORMATION ONLY:
DO NOT MANUFACTURE
PARTS TO THIS DRAWING**

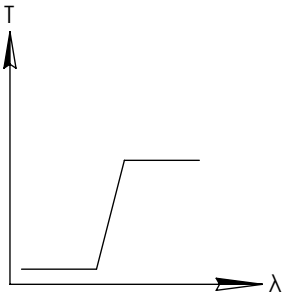
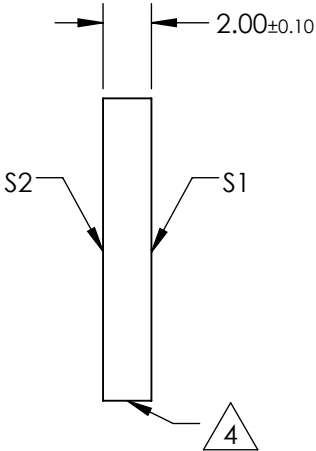
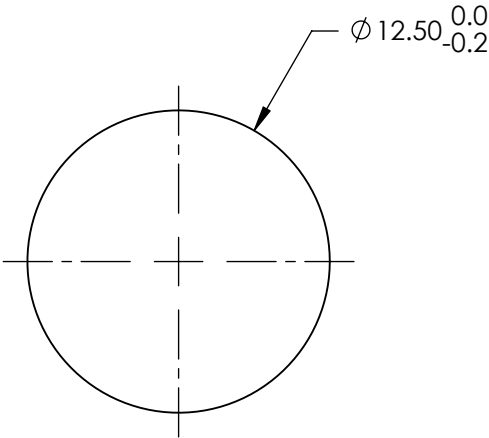
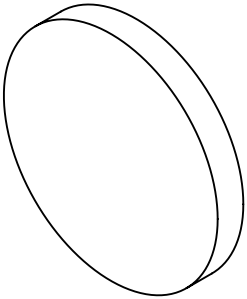
NOTES:

1. SUBSTRATE
2. SURFACE S2 TO BE PARALLEL WITH SURFACE S1 TO WITHIN 5 arcsec
3. COATING (APPLY ACROSS COATING APERTURE)
S1: HARD DIELECTRIC SPUTTERED
T(avg): $\geq 91\%$ FROM 765 - 1650nm @ 0° AOI
T(avg): $\leq 0.01\%$ FROM 200 - 735nm @ 0° AOI
T(abs): $\approx 50\%$ FOR 750 \pm 7.5nm @ 0° AOI

S2: SINGLE LAYER MgF2

 FINE GRIND SURFACE

5. POWER, IRREGULARITY, AND SURFACE QUALITY SPECIFICATIONS
APPLY ACROSS CLEAR APERTURE
6. TRANSMITTED WAVEFRONT DISTORTION, RMS: $\leq \lambda/4$ @ 633nm
7. ROHS COMPLIANT



LONGPASS FILTER

SPECIFICATIONS SUBJECT TO CHANGE WITHOUT NOTICE
DIMENSIONS ARE FOR REFERENCE ONLY

REV A	S1	S2
SHAPE	PLANO	PLANO
SURFACE QUALITY	40-20	40-20
CLEAR APERTURE	>80%	>80%
BEVEL	PROTECTIVE AS NEEDED	PROTECTIVE AS NEEDED



ALL DIMS IN mm

 **Edmund Optics®**

TITLE	Ø12.5mm, 750nm, HIGH PERFORMANCE LONGPASS FILTER		
DWG NO	66226	SHEET	1 OF 1

**FOR INFORMATION ONLY:
DO NOT MANUFACTURE
PARTS TO THIS DRAWING**

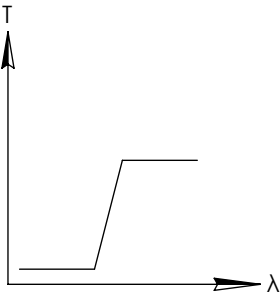
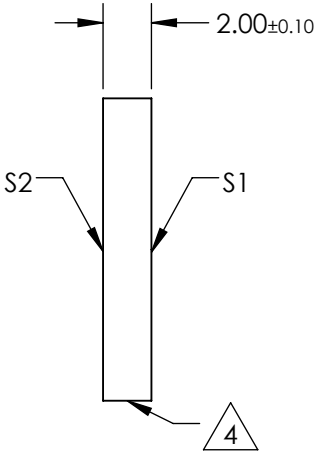
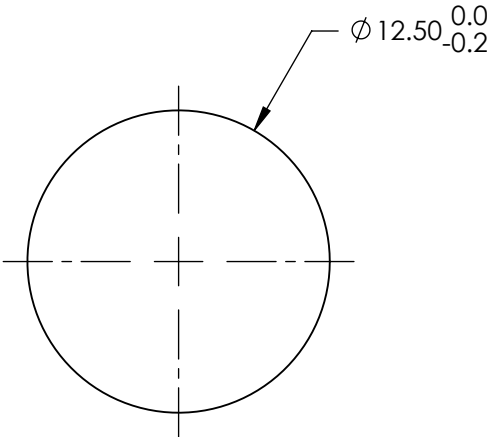
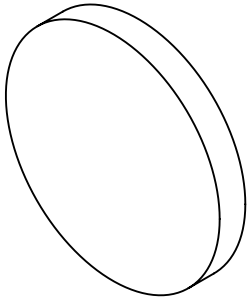
NOTES:

1. SUBSTRATE
2. SURFACE S2 TO BE PARALLEL WITH SURFACE S1 TO WITHIN 5 arcsec
3. COATING (APPLY ACROSS COATING APERTURE)
S1: HARD DIELECTRIC SPUTTERED
T(avg): $\geq 91\%$ FROM 433 - 1650nm @ 0° AOI
T(avg): $\leq 0.01\%$ FROM 200 - 415nm @ 0° AOI
T(abs): $\approx 50\%$ FOR 425 \pm 4.25nm @ 0° AOI

S2: SINGLE LAYER MgF2

 FINE GRIND SURFACE

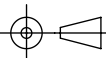
5. POWER, IRREGULARITY, AND SURFACE QUALITY SPECIFICATIONS
APPLY ACROSS CLEAR APERTURE
6. TRANSMITTED WAVEFRONT DISTORTION, RMS: $\leq \lambda/4$ @ 633nm
7. ROHS COMPLIANT



LONGPASS FILTER

SPECIFICATIONS SUBJECT TO CHANGE WITHOUT NOTICE
DIMENSIONS ARE FOR REFERENCE ONLY

REV A	S1	S2
SHAPE	PLANO	PLANO
SURFACE QUALITY	40-20	40-20
CLEAR APERTURE	>80%	>80%
BEVEL	PROTECTIVE AS NEEDED	PROTECTIVE AS NEEDED

THIRD ANGLE PROJECTION 		Edmund Optics®	
TITLE		Ø12.5mm, 425nm, HIGH PERFORMANCE LONGPASS FILTER	
ALL DIMS IN	mm	DWG NO	84736
			SHEET 1 OF 1

NOTES:

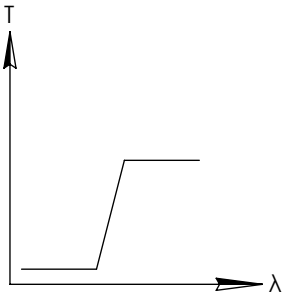
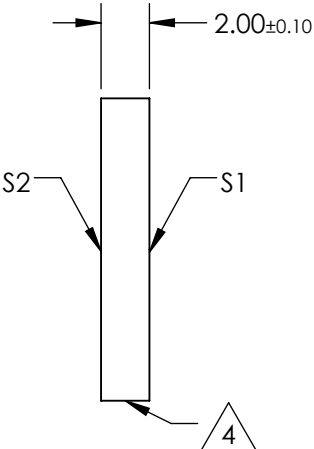
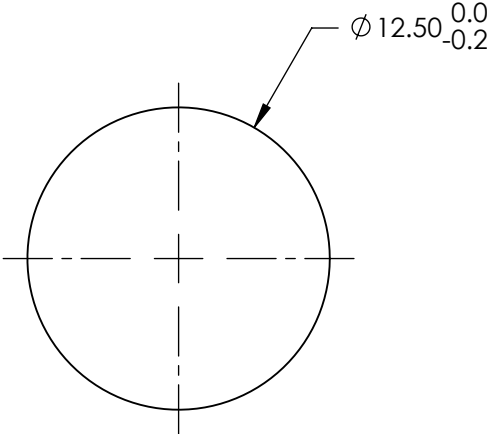
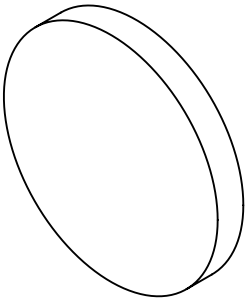
1. SUBSTRATE
2. SURFACE S2 TO BE PARALLEL WITH SURFACE S1 TO WITHIN 5 arcsec
3. COATING (APPLY ACROSS COATING APERTURE)
S1: HARD DIELECTRIC SPUTTERED
T(avg): ≥91% FROM 483 - 1650nm @ 0° AOI
T(avg): ≤0.01% FROM 200 - 465nm @ 0° AOI
T(abs): =50% FOR 475±4.75nm @ 0° AOI

S2:SINGLE LAYER MgF2

4. FINE GRIND SURFACE

5. POWER, IRREGULARITY, AND SURFACE QUALITY SPECIFICATIONS
APPLY ACROSS CLEAR APERTURE
6. TRANSMITTED WAVEFRONT DISTORTION, RMS: ≤λ/4 @ 633nm
7. ROHS COMPLIANT

**FOR INFORMATION ONLY:
DO NOT MANUFACTURE
PARTS TO THIS DRAWING**



LONGPASS FILTER

SPECIFICATIONS SUBJECT TO CHANGE WITHOUT NOTICE
DIMENSIONS ARE FOR REFERENCE ONLY

REV A	S1	S2
SHAPE	PLANO	PLANO
SURFACE QUALITY	40-20	40-20
CLEAR APERTURE	>80%	>80%
BEVEL	PROTECTIVE AS NEEDED	PROTECTIVE AS NEEDED

THIRD ANGLE PROJECTION		Edmund Optics®	
ALL DIMS IN mm		TITLE	Ø12.5mm, 475nm, HIGH PERFORMANCE LONGPASS FILTER
DWG NO		84737	SHEET 1 OF 1

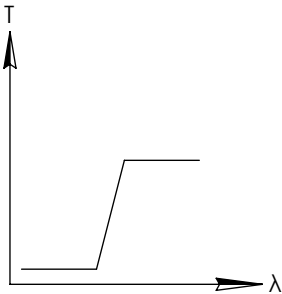
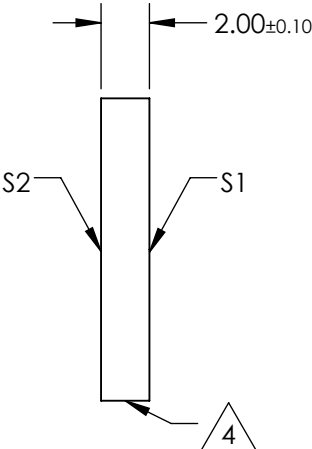
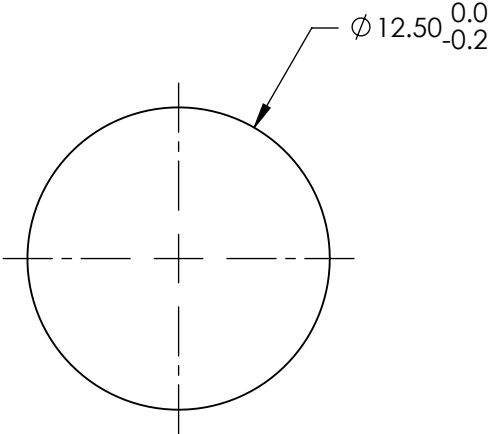
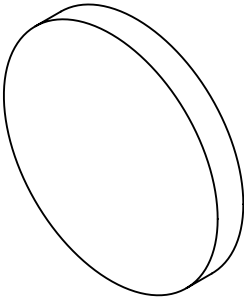
**FOR INFORMATION ONLY:
DO NOT MANUFACTURE
PARTS TO THIS DRAWING**

NOTES:

- 1. SUBSTRATE
- 2. SURFACE S2 TO BE PARALLEL WITH SURFACE S1 TO WITHIN 5 arcsec
- 3. COATING (APPLY ACROSS COATING APERTURE)
 - S1: HARD DIELECTRIC SPUTTERED
 - T(avg): ≥91% FROM 534 - 1650nm @ 0° AOI
 - T(avg): ≤0.01% FROM 200 - 515nm @ 0° AOI
 - T(abs): =50% FOR 525±5.25nm @ 0° AOI
 - S2:SINGLE LAYER MgF2

4. FINE GRIND SURFACE

- 5. POWER, IRREGULARITY, AND SURFACE QUALITY SPECIFICATIONS
APPLY ACROSS CLEAR APERTURE
- 6. TRANSMITTED WAVEFRONT DISTORTION, RMS: ≤λ/4 @ 633nm
- 7. ROHS COMPLIANT



LONGPASS FILTER

SPECIFICATIONS SUBJECT TO CHANGE WITHOUT NOTICE
DIMENSIONS ARE FOR REFERENCE ONLY

REV A	S1	S2
SHAPE	PLANO	PLANO
SURFACE QUALITY	40-20	40-20
CLEAR APERTURE	>80%	>80%
BEVEL	PROTECTIVE AS NEEDED	PROTECTIVE AS NEEDED

Edmund Optics®



ALL DIMS IN

mm

TITLE

Ø12.5mm, 525nm, HIGH PERFORMANCE
LONGPASS FILTER

DWG NO

84738

SHEET
1 OF 1

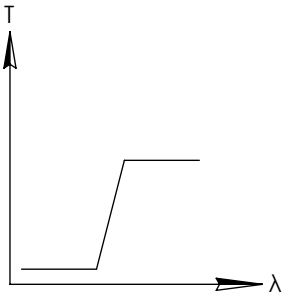
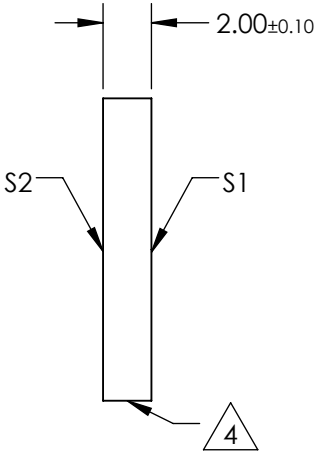
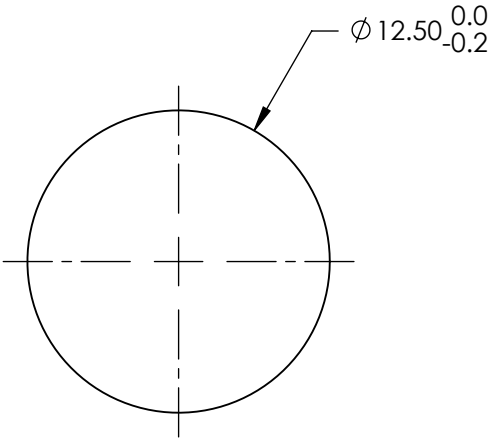
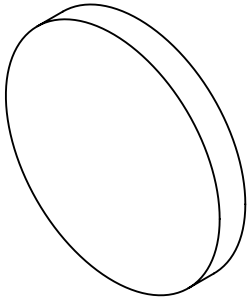
**FOR INFORMATION ONLY:
DO NOT MANUFACTURE
PARTS TO THIS DRAWING**

NOTES:

1. SUBSTRATE
2. SURFACE S2 TO BE PARALLEL WITH SURFACE S1 TO WITHIN 5 arcsec
3. COATING (APPLY ACROSS COATING APERTURE)
S1: HARD DIELECTRIC SPUTTERED
T(avg): $\geq 91\%$ FROM 585 - 1650nm @ 0° AOI
T(avg): $\leq 0.01\%$ FROM 200 - 564nm @ 0° AOI
T(abs): $\approx 50\%$ FOR 575 \pm 5.75nm @ 0° AOI
S2: SINGLE LAYER MgF2

4. FINE GRIND SURFACE

5. POWER, IRREGULARITY, AND SURFACE QUALITY SPECIFICATIONS
APPLY ACROSS CLEAR APERTURE
6. TRANSMITTED WAVEFRONT DISTORTION, RMS: $\leq \lambda/4$ @ 633nm
7. ROHS COMPLIANT



LONGPASS FILTER

SPECIFICATIONS SUBJECT TO CHANGE WITHOUT NOTICE
DIMENSIONS ARE FOR REFERENCE ONLY

REV A	S1	S2
SHAPE	PLANO	PLANO
SURFACE QUALITY	40-20	40-20
CLEAR APERTURE	>80%	>80%
BEVEL	PROTECTIVE AS NEEDED	PROTECTIVE AS NEEDED

THIRD ANGLE PROJECTION		TITLE		Ø12.5mm, 575nm, HIGH PERFORMANCE LONGPASS FILTER	
ALL DIMS IN	mm	DWG NO	84739	SHEET 1 OF 1	

Edmund Optics®

**FOR INFORMATION ONLY:
DO NOT MANUFACTURE
PARTS TO THIS DRAWING**

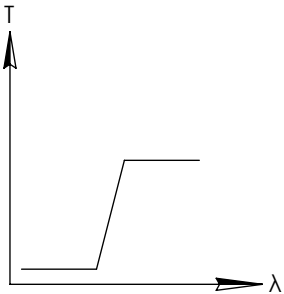
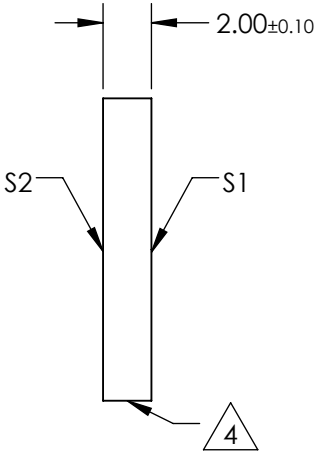
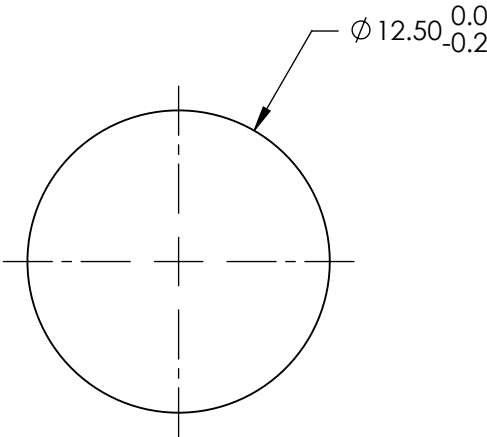
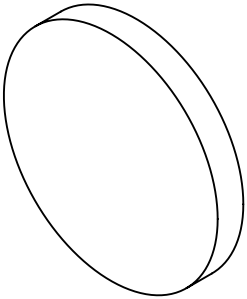
NOTES:

1. SUBSTRATE
2. SURFACE S2 TO BE PARALLEL WITH SURFACE S1 TO WITHIN 5 arcsec
3. COATING (APPLY ACROSS COATING APERTURE)
S1: HARD DIELECTRIC SPUTTERED
T(avg): $\geq 91\%$ FROM 635 - 1650nm @ 0° AOI
T(avg): $\leq 0.01\%$ FROM 200 - 613nm @ 0° AOI
T(abs): $\approx 50\%$ FOR 625 \pm 6.25nm @ 0° AOI

S2: SINGLE LAYER MgF2

 FINE GRIND SURFACE

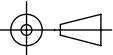
5. POWER, IRREGULARITY, AND SURFACE QUALITY SPECIFICATIONS
APPLY ACROSS CLEAR APERTURE
6. TRANSMITTED WAVEFRONT DISTORTION, RMS: $\leq \lambda/4$ @ 633nm
7. ROHS COMPLIANT




LONGPASS FILTER

SPECIFICATIONS SUBJECT TO CHANGE WITHOUT NOTICE
DIMENSIONS ARE FOR REFERENCE ONLY

REV A	S1	S2
SHAPE	PLANO	PLANO
SURFACE QUALITY	40-20	40-20
CLEAR APERTURE	>80%	>80%
BEVEL	PROTECTIVE AS NEEDED	PROTECTIVE AS NEEDED

THIRD ANGLE PROJECTION 

ALL DIMS IN	mm
-------------	----

 Edmund Optics®	
TITLE	Ø12.5mm, 625nm, HIGH PERFORMANCE LONGPASS FILTER
DWG NO	84740
SHEET 1 OF 1	

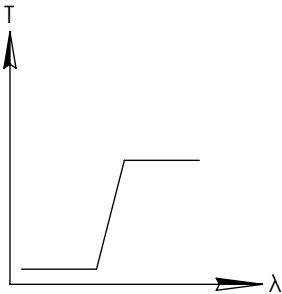
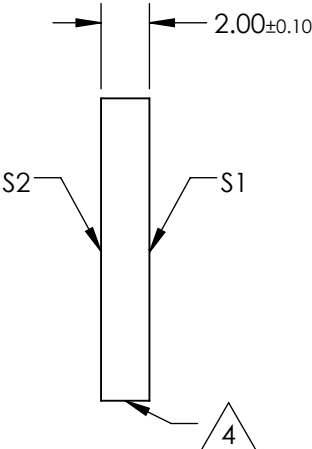
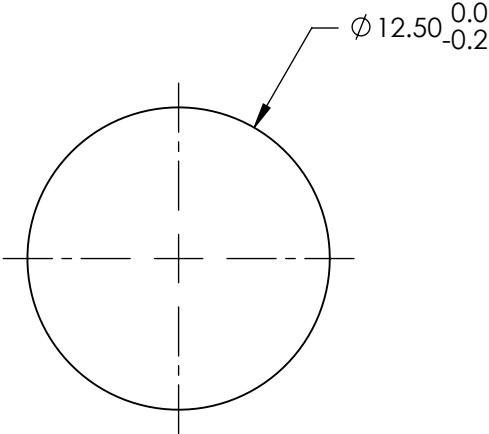
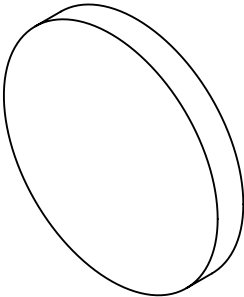
**FOR INFORMATION ONLY:
DO NOT MANUFACTURE
PARTS TO THIS DRAWING**

NOTES:

- 1. SUBSTRATE
- 2. SURFACE S2 TO BE PARALLEL WITH SURFACE S1 TO WITHIN 5 arcsec
- 3. COATING (APPLY ACROSS COATING APERTURE)
S1: HARD DIELECTRIC SPUTTERED
T(avg): ≥91% FROM 685 - 1650nm @ 0° AOI
T(avg): ≤0.01% FROM 200 - 662nm @ 0° AOI
T(abs): =50% FOR 675±6.75nm @ 0° AOI
S2:SINGLE LAYER MgF2

4. FINE GRIND SURFACE

- 5. POWER, IRREGULARITY, AND SURFACE QUALITY SPECIFICATIONS
APPLY ACROSS CLEAR APERTURE
- 6. TRANSMITTED WAVEFRONT DISTORTION, RMS: ≤λ/4 @ 633nm
- 7. ROHS COMPLIANT



LONGPASS FILTER

SPECIFICATIONS SUBJECT TO CHANGE WITHOUT NOTICE
DIMENSIONS ARE FOR REFERENCE ONLY

REV A	S1	S2
SHAPE	PLANO	PLANO
SURFACE QUALITY	40-20	40-20
CLEAR APERTURE	>80%	>80%
BEVEL	PROTECTIVE AS NEEDED	PROTECTIVE AS NEEDED

THIRD ANGLE PROJECTION		Edmund Optics®	
ALL DIMS IN mm		TITLE	Ø12.5mm, 675nm, HIGH PERFORMANCE LONGPASS FILTER
		DWG NO	84741
		SHEET 1 OF 1	