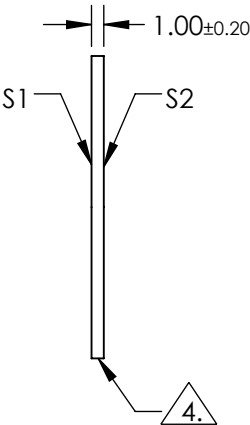
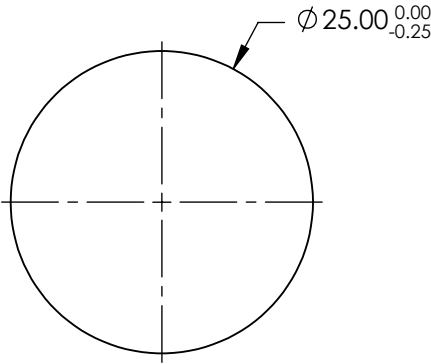
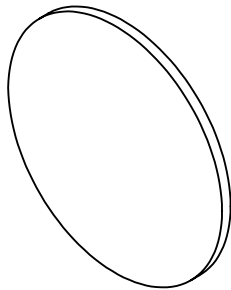


NOTES:

- 1. SUBSTRATE: N-BK7
- 2. S2 TO BE PARALLEL WITH S1 TO < 1 ARCMIN
- 3. COATING (APPLY ACROSS CLEAR APERTURE)
 - S1 & S2: R(ABS) <0.25% @ 532nm
 - R(ABS) <0.25% @ 1064nm
 - R(AVG) <1.0% @ 500 - 1100nm

4. FINE GRIND SURFACE

- 5. RoHS COMPLIANT
- 6. SURFACE FLATNESS (P-V): $\lambda/4$ (per inch over clear aperture)



**FOR INFORMATION ONLY:
DO NOT MANUFACTURE
PARTS TO THIS DRAWING**

SPECIFICATIONS SUBJECT TO CHANGE WITHOUT NOTICE
DIMENSIONS ARE FOR REFERENCE ONLY

| | S1 | S2 |
|-----------------|----------------------|----------------------|
| SHAPE | PLANO | PLANO |
| SURFACE QUALITY | 60-40 | 60-40 |
| CLEAR APERTURE | Ø22.50 | Ø22.50 |
| BEVEL | PROTECTIVE AS NEEDED | PROTECTIVE AS NEEDED |



ALL DIMS IN mm

Edmund Optics®

TITLE 25mm DIA., 1mm THICK, YAG-BBAR COATED,
 $\lambda/4$ N-BK7 WINDOW

DWG NO 13316

SHEET
1 OF 1