

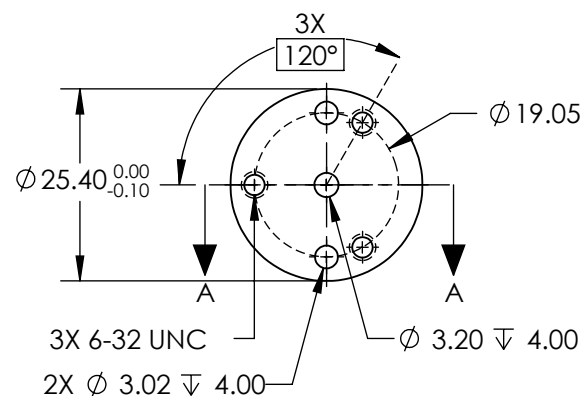
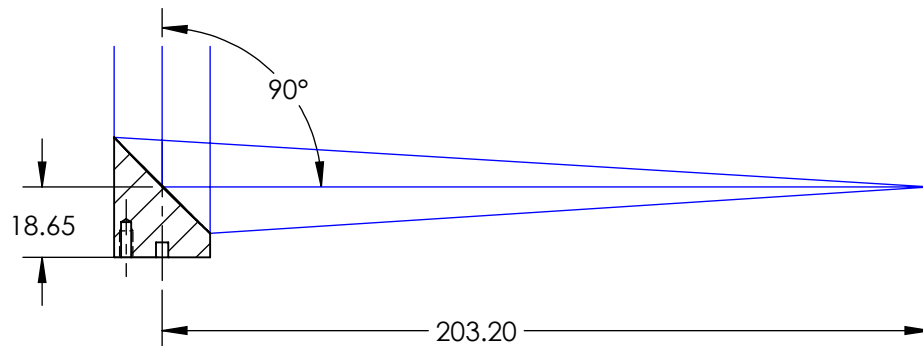
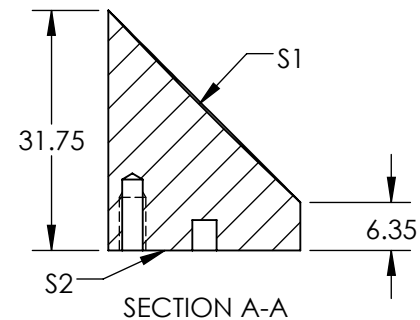
NOTES:

1. SUBSTRATE MATERIAL:  
ALUMINUM
2. FINISH (EXCEPT SURFACE S1 & S2):  
BLACK ANODIZED
3. COATING (APPLY ACROSS CLEAR APERTURE)  
S1: DIELECTRIC MIRROR (1064nm)  
R(AVG) >99.5% @ 1064nm @ 45°

SURFACE ROUGHNESS: <50 Å RMS

4. FOCAL LENGTH TOLERANCE: ±1%
5. ROHS COMPLIANT

**FOR INFORMATION ONLY:  
DO NOT MANUFACTURE  
PARTS TO THIS DRAWING**



SPECIFICATIONS SUBJECT TO CHANGE WITHOUT NOTICE  
DIMENSIONS ARE FOR REFERENCE ONLY

REV. A	S1
SHAPE	PARABOLIC
SURFACE FIGURE AT 632.8nm (RMS)	$\lambda/8$
CLEAR APERTURE	90%
BEVEL	PROTECTIVE AS NEEDED



ALL DIMS IN mm



**Edmund Optics®**

Ø25.4 X 203.2mm EFL, 1064nm DIELECTRIC  
OFF-AXIS PARABOLIC MIRROR

DWG NO

15378

SHEET  
1 OF 1