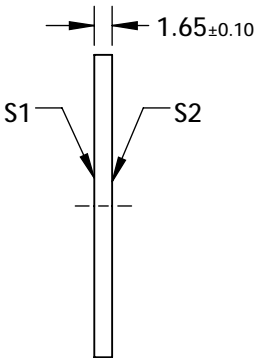
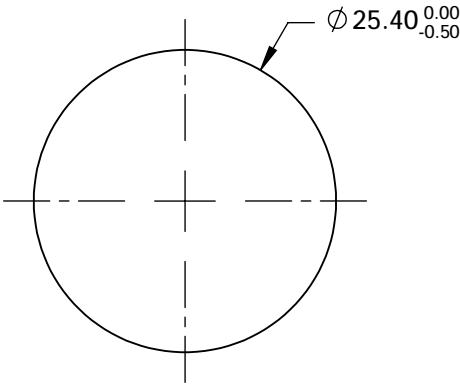
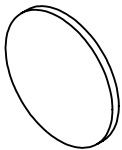


- NOTES:
- 1. SUBSTRATE MATERIAL:  
Fused Silica
  - 2. SURFACE S1 TO BE PARALLEL TO SURFACE S2 TO WITHIN <3 ARCMIN
  - 3. COATING (APPLY ACROSS COATING APERTURE)  
  
S1: Square Aluminum (AlMgF2) Apertures  
R: 80±5% @ 250 - 2000 nm @ 45° AOI  
T: 20±5% @ 250 - 2000 nm @ 45° AOI  
  
S2: NONE
  - 4. POLKA DOT CENTER TO CENTER SPACING : 0.15 mm  
POLKA DOT MINIMUM APERTURE: 2mm
  - 5. ROHS : COMPLIANT



**FOR INFORMATION ONLY:**  
**DO NOT MANUFACTURE**  
**PARTS TO THIS DRAWING**

SPECIFICATIONS SUBJECT TO CHANGE WITHOUT NOTICE  
DIMENSIONS ARE FOR REFERENCE ONLY

	S1	S2
SHAPE	PLANO	PLANO
SURFACE QUALITY	80-50	80-50
CLEAR APERTURE	Ø 22.86	Ø 22.86
BEVEL	PROTECTIVE AS NEEDED	PROTECTIVE AS NEEDED

THIRD ANGLE  
PROJECTION

ALL DIMS IN      mm

 **Edmund Optics®**

TITLE	25.4mm Dia 80R/20T, UV-NIR Polka-Dot Beamsplitter		
DWG NO	18716	SHEET	1 OF 1