

NOTES:

- SUBSTRATE:  
Fused Silica
- CENTERING TOLERANCE (AT 587.6nm): <3 ARCMIN
- COATING (APPLY ACROSS COATING APERTURE)  
S1: NONE  
S2: NONE

4. EDGES: FINE GROUND

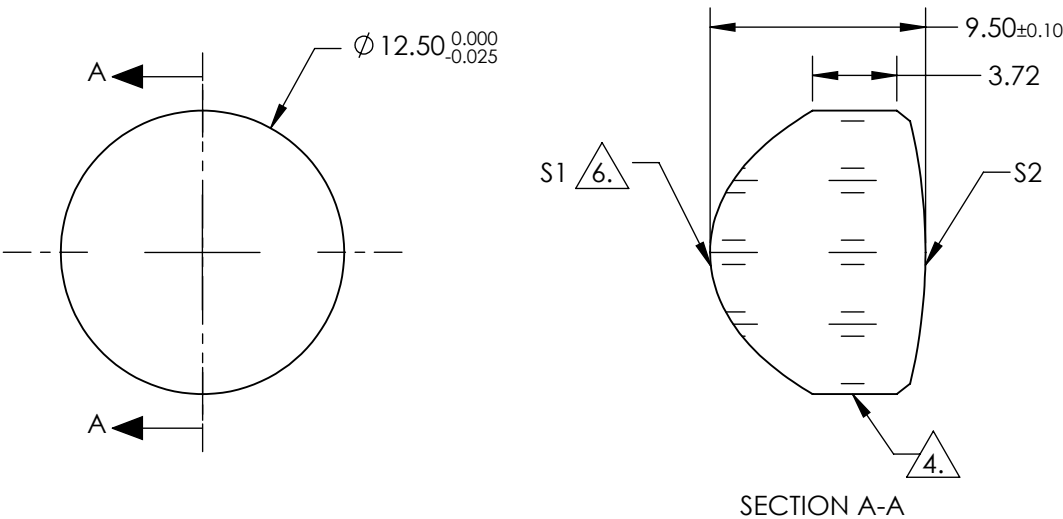
5. ASPHERIC FIGURE ERROR: 0.25 µm RMS

6. ASPHERIC SURFACE DESCRIBED BY (REF. COEFFICIENT TABLE):

$$Z_{ASPH}(Y) = \frac{(\frac{1}{RADIUS}) * Y^2}{1 + \sqrt{1 - (1+k) * (\frac{1}{RADIUS})^2 * Y^2}} + D * Y^2 + E * Y^4 + F * Y^6 + G * Y^8 + H * Y^{10} + J * Y^{12} + L * Y^{14}$$


**FOR INFORMATION ONLY:  
DO NOT MANUFACTURE  
PARTS TO THIS DRAWING**

SPECIFICATIONS SUBJECT TO CHANGE WITHOUT NOTICE  
DIMENSIONS ARE FOR REFERENCE ONLY



COEFFICIENT TABLE 6.	
COEFFICIENT	S1
SEMI-DIAMETER	6.250000E+00
(1/RADIUS)	1.939488E-01
k	-5.550000E-01
D	0.000000E+00
E	5.205427E-06
F	-9.064991E-07
G	-9.846282E-09
H	-1.758713E-09
J	3.226290E-11
L	-9.698785E-13

	S1	S2
SHAPE	CONVEX	CONVEX
SURFACE QUALITY	40-20	40-20
CLEAR APERTURE	Ø 11.25mm	Ø 11.25mm
BEVEL	PROTECTIVE AS NEEDED	PROTECTIVE AS NEEDED

EFL @ 355nm: 10.00	
BFL @ 355nm: 4.06	
THIRD ANGLE PROJECTION	
	
ALL DIMS IN	mm

**Edmund Optics®**

TITLE 12.5mm Dia 0.58 NA Uncoated, UV Fused Silica Aspheric Lens

DWG NO 17321 SHEET 1 OF 1