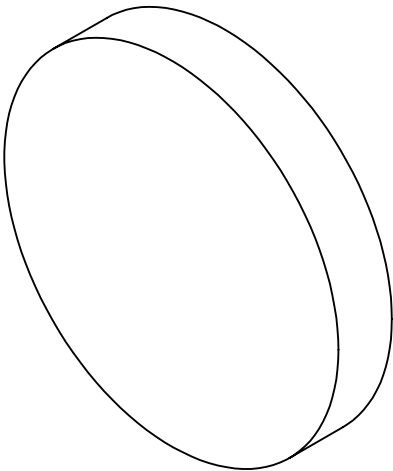
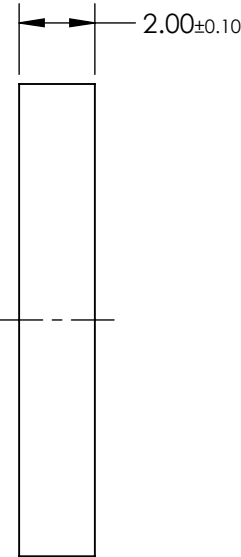
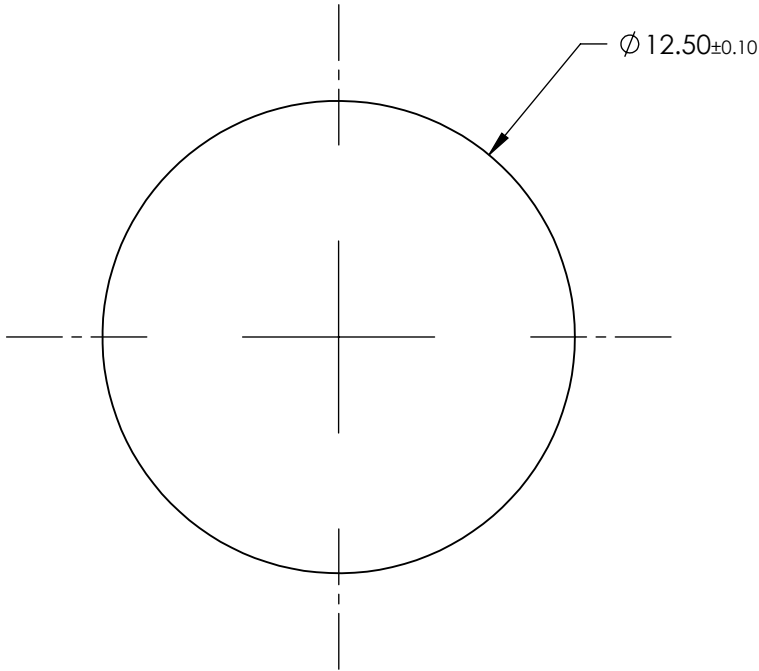


- NOTES:
- 1. MATERIAL: UV Grade Fused Silica
 - 2. TRANSMITTED WAVEFRONT ERROR: < λ/4

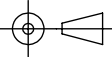


| | VALUE |
|--|-----------------------------|
| CENTER WAVELENGTH (CWL) | 357.00 nm |
| TRANSMISSION BANDWIDTH (MINIMUM) | 44.00 nm |
| FULL WIDTH HALF MAX (TYPICAL) | 48.00 nm |
| AVERAGE TRANSMISSION OVER BANDWIDTH (MINIMUM) | 75 % |
| BLOCKING WAVELENGTH RANGE | 250 - 1100 nm |
| OD6 BLOCKING RANGE < 3% FROM EDGE OF BANDWIDTH | 250 - 320 & 383 - 500 |
| CLEAR APERTURE (mm) | Ø 11.25 |
| SURFACE QUALITY | 60-40 |
| COATING TYPE | HARD COATED |
| DURABILITY | MIL-C-48497A, SECTION 3.4.1 |
| ENVIRONMENTAL | MIL-STD-810F, SECTION 507.4 |

FOR INFORMATION ONLY:
DO NOT MANUFACTURE
PARTS TO THIS DRAWING

SPECIFICATIONS SUBJECT TO CHANGE WITHOUT NOTICE
DIMENSIONS ARE FOR REFERENCE ONLY

EO® **Edmund Optics®**

| | | | | |
|--|----|--------|--|-----------------|
| THIRD ANGLE PROJECTION  | | TITLE | 357nm CWL, 12.5mm Dia, 44nm Bandwidth, Unmounted OD 6 Fluorescence Bandpass Filter | |
| ALL DIMS IN | mm | DWG NO | 18366 | SHEET 1 OF 1 |