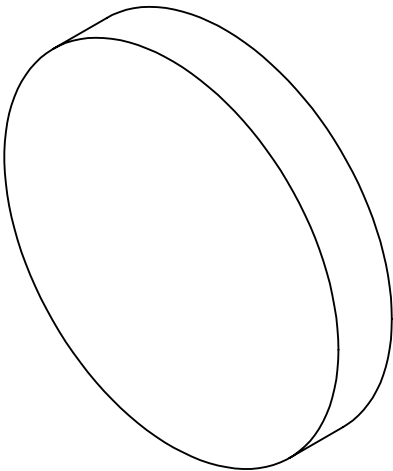
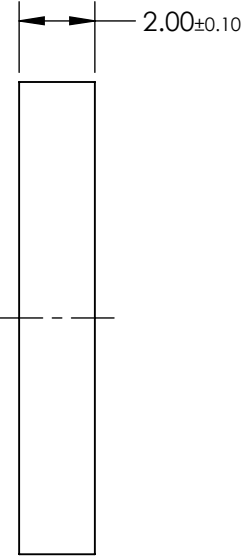
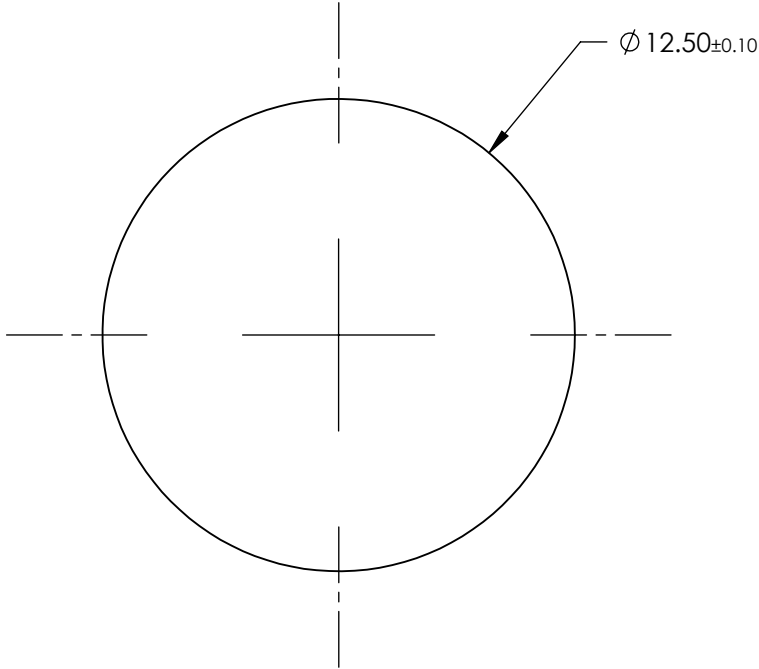


- NOTES:
- 1. MATERIAL: UV Grade Fused Silica
 - 2. TRANSMITTED WAVEFRONT ERROR: < $\lambda/4$

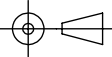


	VALUE
CENTER WAVELENGTH (CWL)	628.00 nm
TRANSMISSION BANDWIDTH (MINIMUM)	32.00 nm
FULL WIDTH HALF MAX (TYPICAL)	38.00 nm
AVERAGE TRANSMISSION OVER BANDWIDTH (MINIMUM)	93 %
BLOCKING WAVELENGTH RANGE	250 - 1100 nm
OD6 BLOCKING RANGE < 3% FROM EDGE OF BANDWIDTH	250 - 598 & 659 - 925
CLEAR APERTURE (mm)	Ø 11.25
SURFACE QUALITY	60-40
COATING TYPE	HARD COATED
DURABILITY	MIL-C-48497A, SECTION 3.4.1
ENVIRONMENTAL	MIL-STD-810F, SECTION 507.4

FOR INFORMATION ONLY:
DO NOT MANUFACTURE
PARTS TO THIS DRAWING

SPECIFICATIONS SUBJECT TO CHANGE WITHOUT NOTICE
DIMENSIONS ARE FOR REFERENCE ONLY

EO® **Edmund Optics®**

THIRD ANGLE PROJECTION 		TITLE	628nm CWL, 12.5mm Dia, 32nm Bandwidth, Unmounted OD 6 Fluorescence Bandpass Filter	
ALL DIMS IN	mm	DWG NO	18380	SHEET 1 OF 1