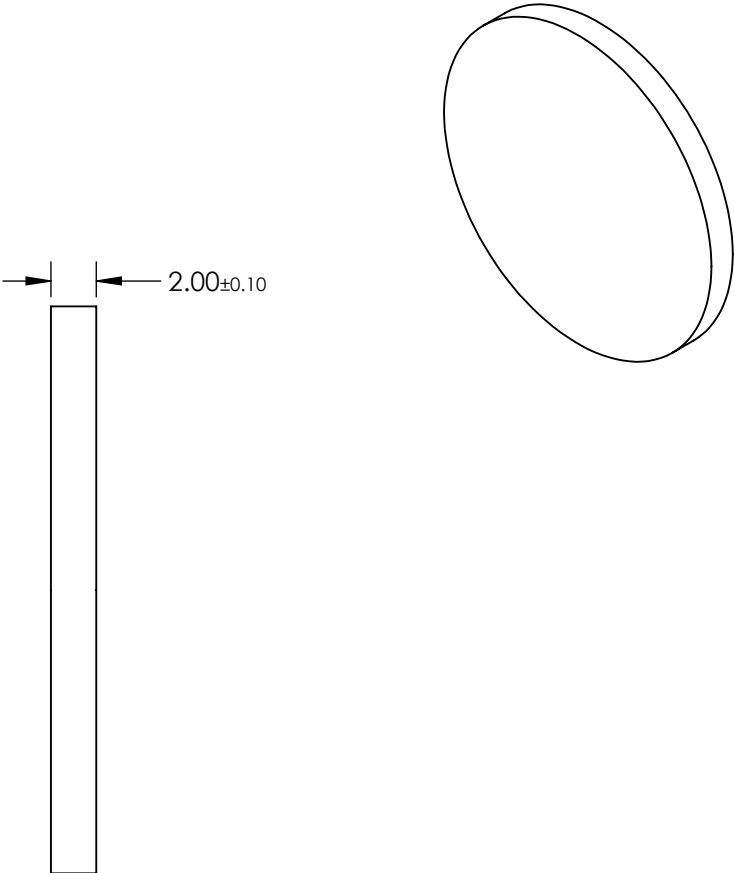
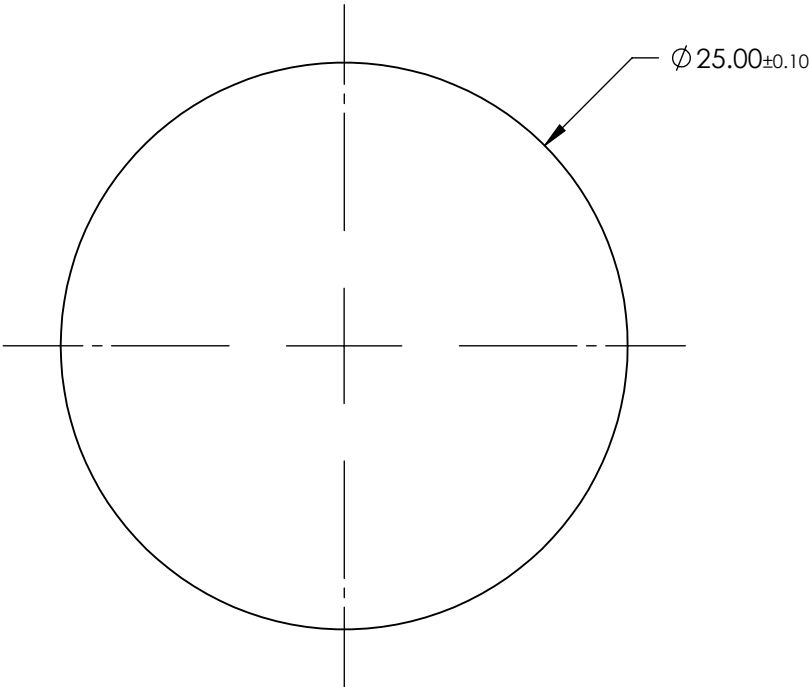


NOTES:

- 1. MATERIAL: UV Grade Fused Silica
- 2. TRANSMITTED WAVEFRONT ERROR: <λ/4



	VALUE
CENTER WAVELENGTH (CWL)	482.50 .00 nm
TRANSMISSION BANDWIDTH (MINIMUM)	31.00 nm
FULL WIDTH HALF MAX (TYPICAL)	36.00 .00 nm
AVERAGE TRANSMISSION OVER BANDWITH (MINIMUM)	93 %
BLOCKING WAVELENGTH RANGE	250 - 1100 nm
OD6 BLOCKING RANGE < 3% FROM EDGE OF BANDWIDTH	250 - 455 & 510 - 660
CLEAR APERTURE (mm)	Ø 22.50
SURFACE QUALITY	60-40
COATING TYPE	HARD COATED
DURABILITY	MIL-C-48497A, SECTION 3.4.1
ENVIRONMENTAL	MIL-STD-810F, SECTION 507.4

FOR INFORMATION ONLY:
DO NOT MANUFACTURE
PARTS TO THIS DRAWING

SPECIFICATIONS SUBJECT TO CHANGE WITHOUT NOTICE
DIMENSIONS ARE FOR REFERENCE ONLY

EO® **Edmund Optics®**

483nm CWL, 25mm Dia, 31nm Bandwidth,
Unmounted OD 6 Fluorescence Bandpass
Filter



THIRD ANGLE
PROJECTION

ALL DIMS IN

mm

TITLE

DWG NO

18389

SHEET
1 OF 1