

NOTES:

- 1. SUBSTRATE:  
SAPPHIRE (AL2O3)
- 2. SURFACE S2 TO BE PARALLEL WITH SURFACE S1 TO WITHIN  $\leq 3.5$  ARCMIN
- 3. COATING (APPLY ACROSS CLEAR APERTURE)

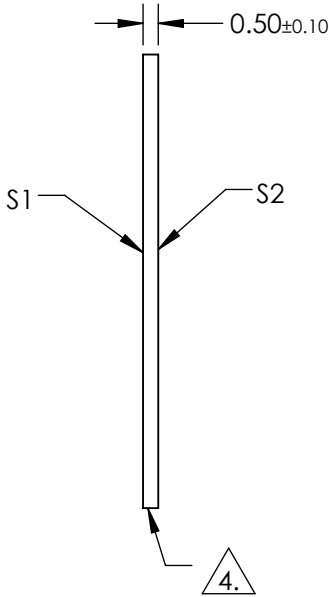
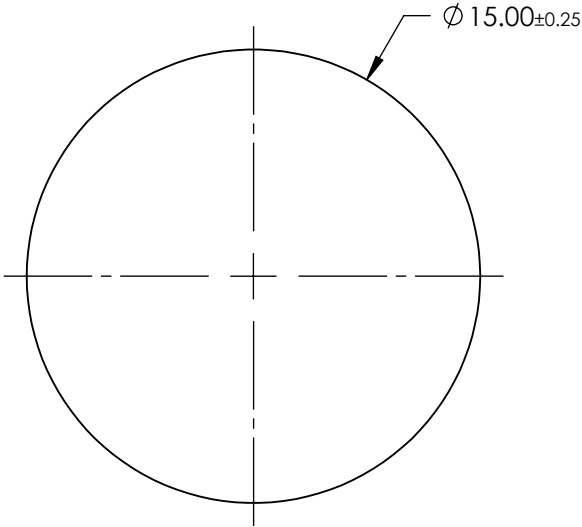
S1 & S2: R(ABS)  $\leq 1.5\%$  @ 750 - 800nm  
R(ABS)  $\leq 1.0\%$  @ 800 - 1550nm  
R(AVG)avg  $\leq 0.7\%$  @ 750 - 1550nm



FINE GRIND SURFACE

- 5. ROHS COMPLIANT

**FOR INFORMATION ONLY:  
DO NOT MANUFACTURE  
PARTS TO THIS DRAWING**



SPECIFICATIONS SUBJECT TO CHANGE WITHOUT NOTICE  
DIMENSIONS ARE FOR REFERENCE ONLY

	S1	S2
SHAPE	PLANO	PLANO
CLEAR APERTURE	Ø13.50	Ø13.50
SURFACE FLATNESS	2λ	2λ
SURFACE QUALITY	80-50	80-50
BIREFRINGENCE (n <sub>o</sub> -n <sub>e</sub> )	0.008	0.008
BEVEL	PROTECTIVE AS NEEDED	PROTECTIVE AS NEEDED

THIRD ANGLE  
PROJECTION

ALL DIMS IN      mm

 **Edmund Optics®**

TITLE	15mm Dia., 0.5mm Thick, NIR II AR Coated Sapphire Window	
DWG NO	20936	SHEET 1 OF 1