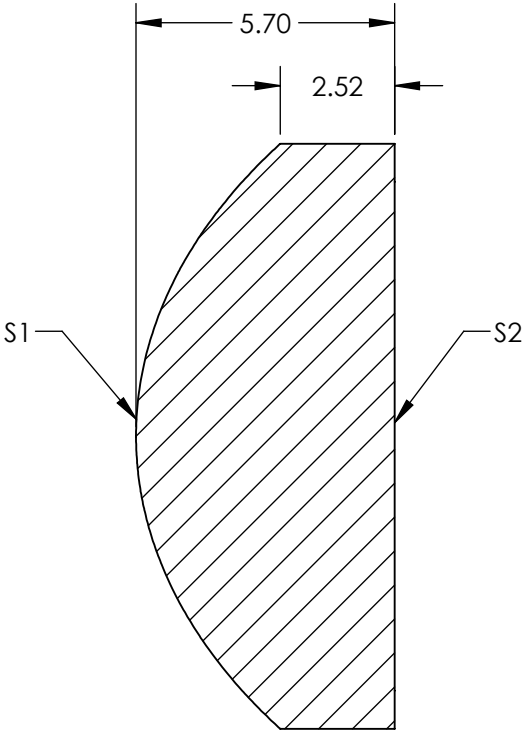
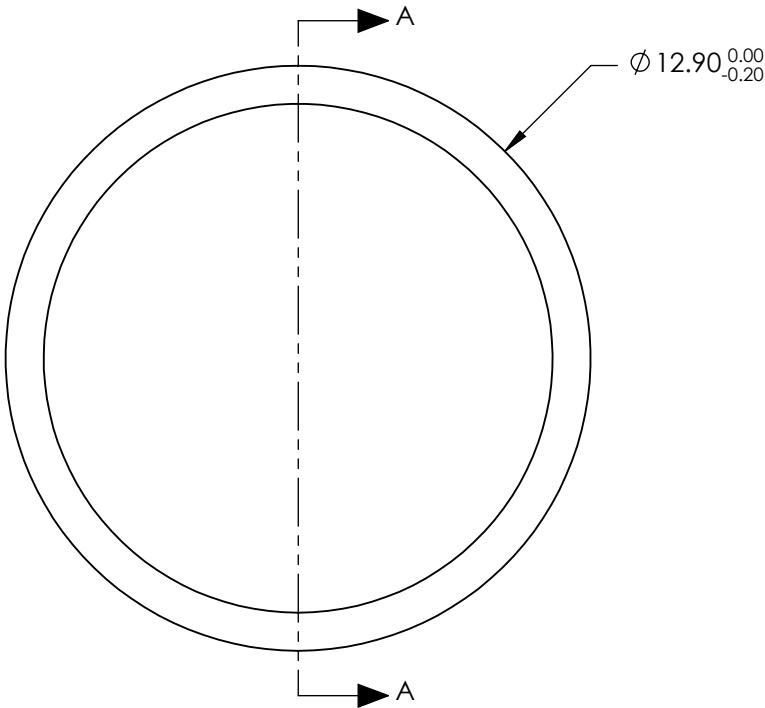


- NOTES:
- 1. SUBSTRATE:
H-K9L
 - 2. COATING (APPLY ACROSS CLEAR APERTURE)

S1 & S2: MgF2 (400-700nm)
R(AVG) ≤ 1.75% @ 400 - 700nm
 - 3. CENTERING: ≤30 ARCMIN



SECTION A-A

**FOR INFORMATION ONLY:
DO NOT MANUFACTURE
PARTS TO THIS DRAWING**

SPECIFICATIONS SUBJECT TO CHANGE WITHOUT NOTICE
DIMENSIONS ARE FOR REFERENCE ONLY

	S1	S2
SHAPE	CONVEX	PLANO
SURFACE QUALITY	80-50 (typical)	80-50 (typical)
CLEAR APERTURE	$\phi 11.61$	$\phi 11.61$
BEVEL	PROTECTED AS NEEDED	PROTECTED AS NEEDED

EFL @ 587.6nm	14.00
BFL @ 587.6nm	10.2
THIRD ANGLE PROJECTION	
ALL DIMS IN	mm

Edmund Optics®			
TITLE	12.9mm Dia. x 14mm FL, MgF2 Coated, Aspheric Condenser Lens		
DWG NO	21196	SHEET 1 OF 1	