

NOTES:

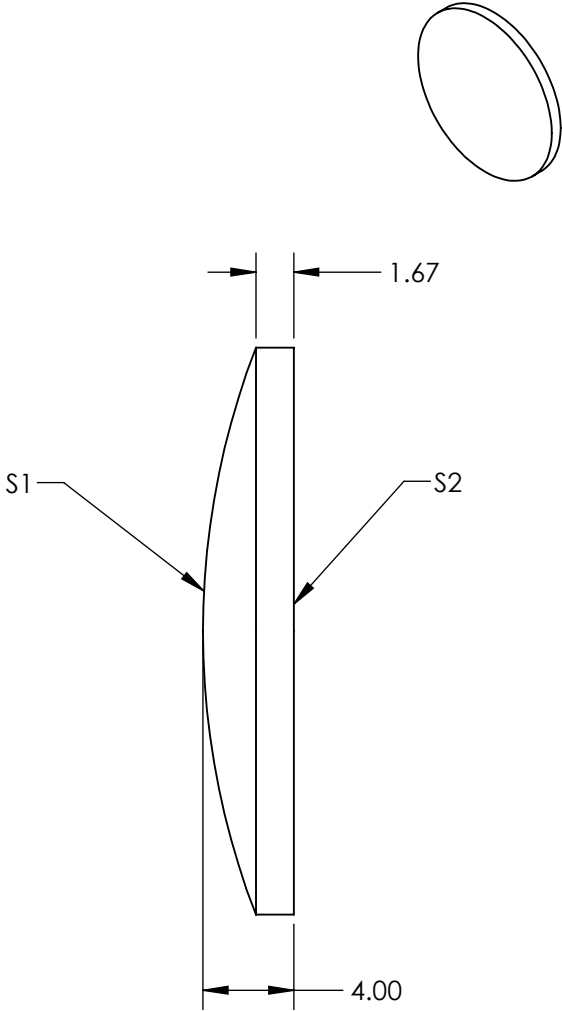
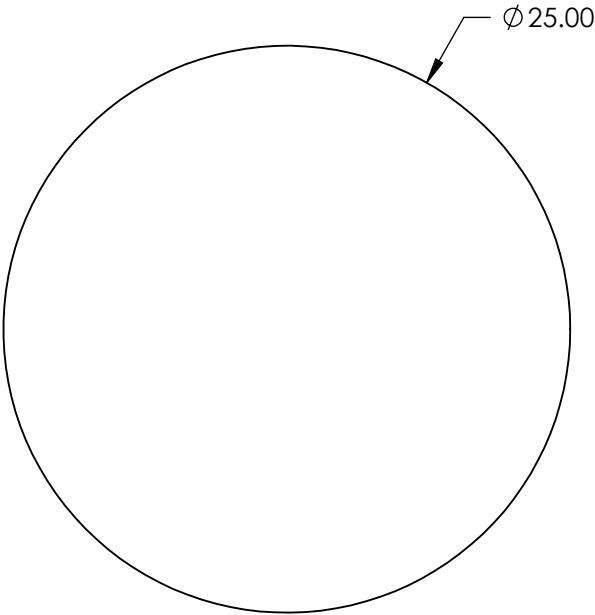
1. SUBSTRATE: VACUUM UV GRADE CaF2

2. COATING

S1: NIR II (750-1550nm)
S2: NIR II (750-1550nm)

3. CENTERING: 1.15 arcmin


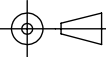
4. RoHS: COMPLIANT



**FOR INFORMATION ONLY:
DO NOT MANUFACTURE
PARTS TO THIS DRAWING**

SPECIFICATIONS SUBJECT TO CHANGE WITHOUT NOTICE
DIMENSIONS ARE FOR REFERENCE ONLY

	S1	S2
SHAPE	CONVEX	PLANO
RADIUS	34.66	INFINITY
SURFACE QUALITY	40-20	40-20
CLEAR APERTURE	$\varnothing 24$	$\varnothing 24$
BEVEL	PROTECTED AS NEEDED	PROTECTED AS NEEDED

 Edmund Optics®			
THIRD ANGLE PROJECTION 		TITLE	LENS PCX CAF2 25 X 75 NIR II CTD
ALL DIMS IN	mm	DWG NO	22530
			SHEET 16 OF 20