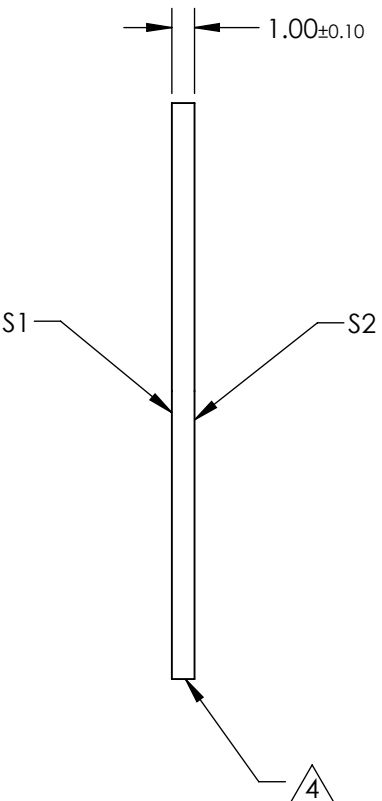
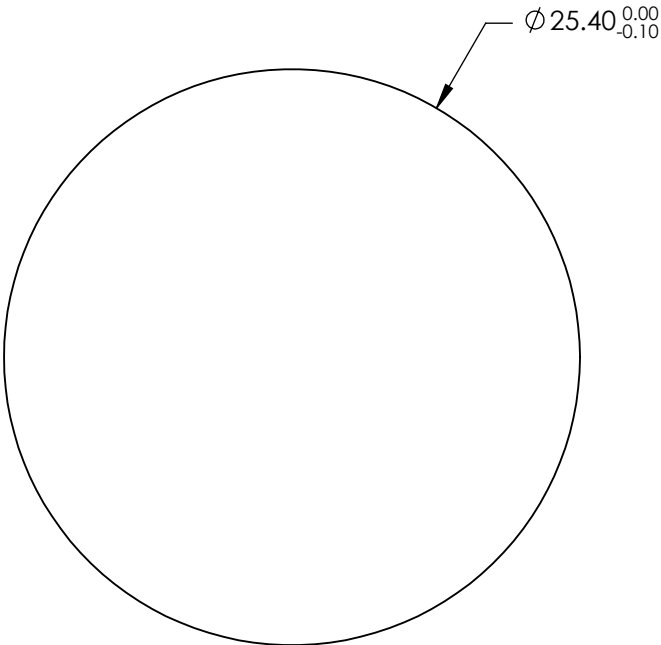
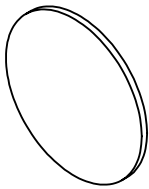


NOTES:

- 1. SUBSTRATE:  
Calcium Fluoride (CaF2) Vacuum UV Grade
- 2. SURFACE S2 TO BE PARALLEL WITH S1 TO <1
- 3. COATING (APPLY ACROSS CLEAR APERTURE)  
S1 & S2: BBAR (2000-5000nm)
- 4. FINE GRIND SURFACE

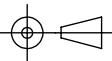


**FOR INFORMATION ONLY:  
DO NOT MANUFACTURE  
PARTS TO THIS DRAWING**

SPECIFICATIONS SUBJECT TO CHANGE WITHOUT NOTICE  
DIMENSIONS ARE FOR REFERENCE ONLY

	S1	S2
SHAPE	PLANO	PLANO
SURFACE QUALITY	40-20	40-20
CLEAR APERTURE	Ø 22.86	Ø 22.86
BEVEL	PROTECTED AS NEEDED	PROTECTED AS NEEDED

THIRD ANGLE  
PROJECTION



ALL DIMS IN

mm



Edmund Optics®

TITLE

25.4mm Dia. x 1mm Thick, BBAR (2000-5000nm) Coated Calcium Fluoride Window

DWG NO

23518

SHEET  
12 OF 28