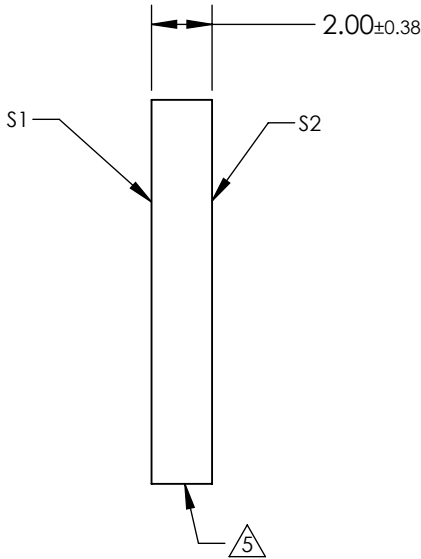
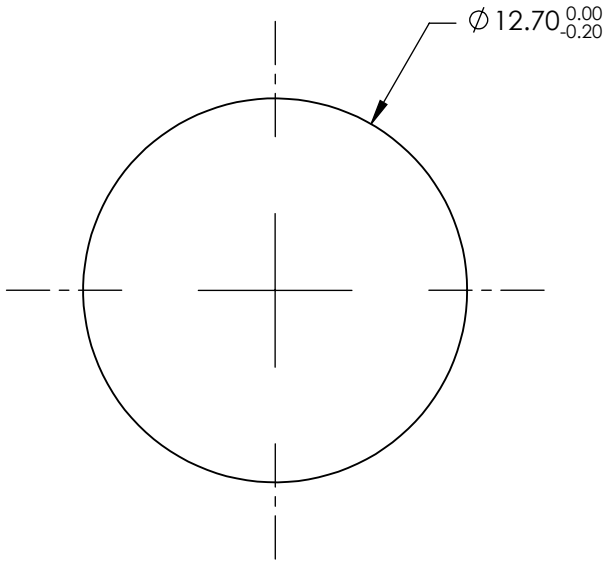


- NOTES:
- 1. SUBSTRATE: Fused Silica (Corning 7980)
 - 2. RoHS COMPLIANT
 - 3. SURFACE S2 TO BE PARALLEL WITH SURFACE S 1 TO WITHIN ACRMINS
 - 4. Coating (Apply Across Clear Aperture):
S1 & S2: Ravg ≤0.4% @ 425 - 675nm

5. FINE GROUND SURFACE



**FOR INFORMATION ONLY:
DO NOT MANUFACTURE
PARTS TO THIS DRAWING**

SPECIFICATIONS SUBJECT TO CHANGE WITHOUT NOTICE
DIMENSIONS ARE FOR REFERENCE ONLY

	S1	S2
Shape	Plano	Plano
Surface Accuracy	1λ	1λ
Surface Quality	60-40	60-40
Clear Aperture	11.43	11.43
Bevel	Protected as Needed	Protected as Needed



ALL DIMS IN mm

Edmund Optics®

TITLE

12.7mm Dia. 2mm Thick VIS 0° Coated, 1λ
Fused Silica Window

DWG NO

25274

SHEET
31 OF 101