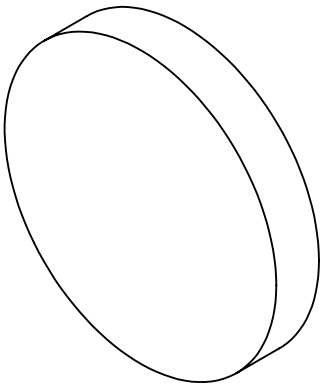
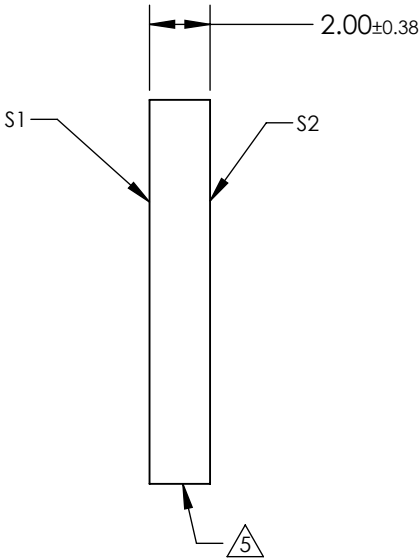
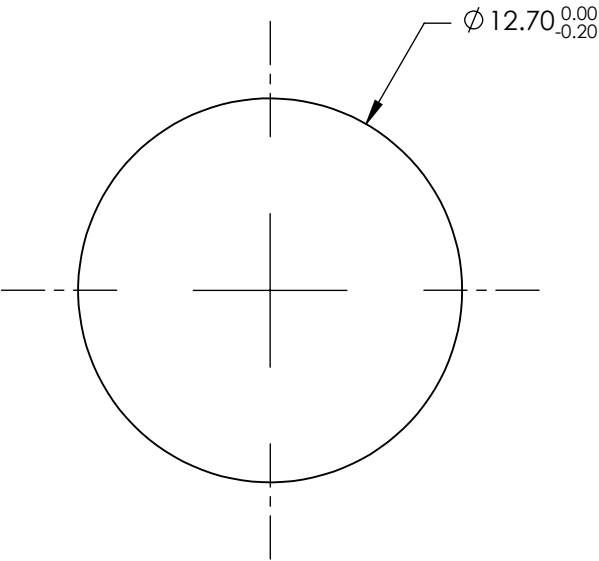


- NOTES:
- 1. SUBSTRATE: Fused Silica (Corning 7980)
 - 2. RoHS COMPLIANT
 - 3. SURFACE S2 TO BE PARALLEL WITH SURFACE S 1 TO WITHIN ACRMINS
 - 4. Coating (Apply Across Clear Aperture):
 - S1 & S2: Rabs ≤1.5% @ 750 - 800nm
 - Rabs ≤1.0% @ 800 - 1550nm
 - Ravg ≤0.7% @ 750 - 1550nm



5. FINE GROUND SURFACE



**FOR INFORMATION ONLY:
DO NOT MANUFACTURE
PARTS TO THIS DRAWING**

SPECIFICATIONS SUBJECT TO CHANGE WITHOUT NOTICE
DIMENSIONS ARE FOR REFERENCE ONLY

	S1	S2
Shape	Plano	Plano
Surface Accuracy	1λ	1λ
Surface Quality	60-40	60-40
Clear Aperture	11.43	11.43
Bevel	Protected as Needed	Protected as Needed



ALL DIMS IN mm

Edmund Optics®

TITLE

12.7mm Dia. 2mm Thick NIR II Coated, 1λ
Fused Silica Window

DWG NO

25296

SHEET
53 OF 101