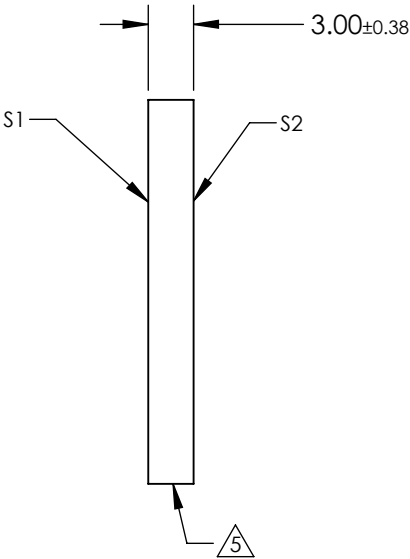
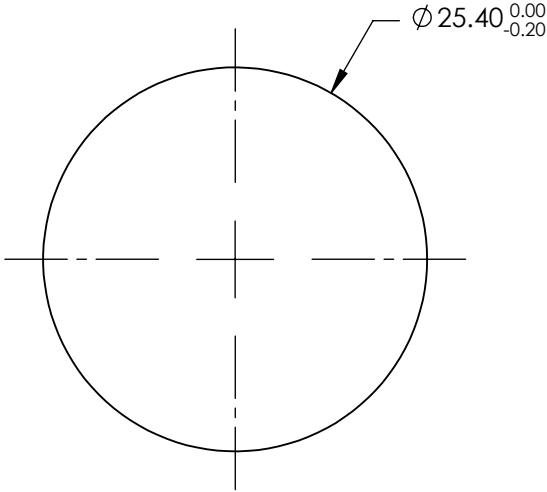



- NOTES:
- 1. SUBSTRATE: Fused Silica (Corning 7980)
 - 2. RoHS COMPLIANT
 - 3. SURFACE S2 TO BE PARALLEL WITH SURFACE S 1 TO WITHIN ACRMINS
 - 4. Coating (Apply Across Clear Aperture):
S1 & S2: Ravg ≤0.5% @ 350 - 700nm

5. FINE GROUND SURFACE



**FOR INFORMATION ONLY:
DO NOT MANUFACTURE
PARTS TO THIS DRAWING**

SPECIFICATIONS SUBJECT TO CHANGE WITHOUT NOTICE
DIMENSIONS ARE FOR REFERENCE ONLY

	S1	S2	<div>THIRD ANGLE PROJECTION</div> 		<div>EO[®] Edmund Optics[®]</div>			
Shape	Plano	Plano			TITLE	25.4mm Dia. 3mm Thick VIS-EXT Coated, 1λ Fused Silica Window		
Surface Accuracy	1λ	1λ			DWG NO	25330		
Surface Quality	60-40	60-40						
Clear Aperture	22.86	22.86						
Bevel	Protected as Needed	Protected as Needed	ALL DIMS IN	mm	SHEET 87 OF 101			

Edmund Optics®